

HARTFORD, KENTUCKY

AL-9266 (FAA)

# VOR/DME-A

HARTFORD / OHIO COUNTY (7K4)

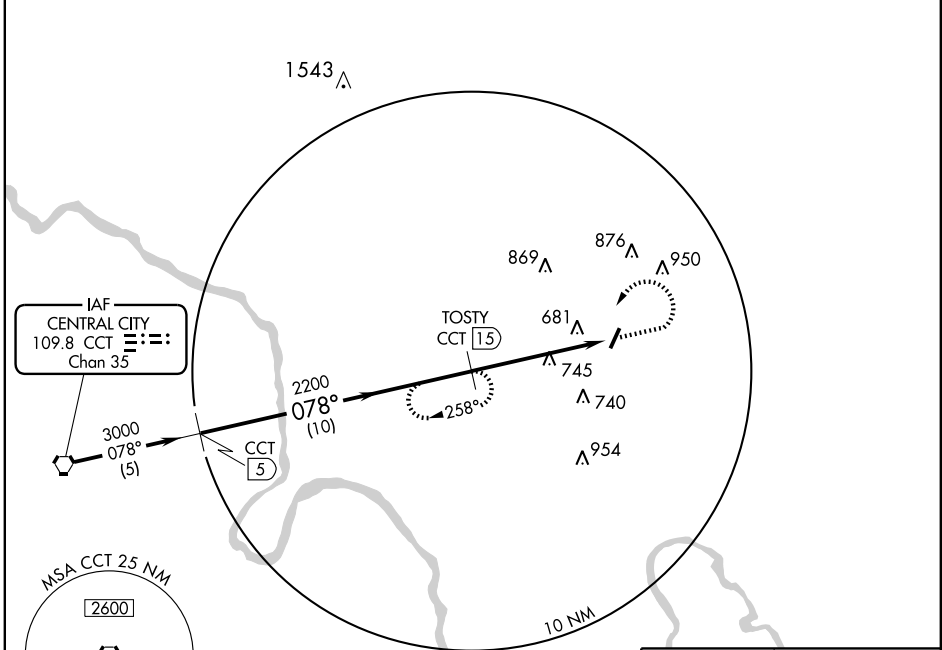
VORTAC CCT <b>109.8</b> Chan <b>35</b>	APP CRS <b>078°</b>	Rwy Idg TDZE Apt Elev <b>N/A</b> <b>N/A</b> <b>535</b>
--	------------------------	---

▼ Obtain local altimeter setting on CTAF; if not received, use Bowling Green altimeter setting.  
▲ NA

MISSED APPROACH: Climb to 1500 then climbing left turn to 3000 via heading 215° and CCT R-078 to TOSTY/15 DME and hold.

EVANSVILLE APP CON ★  
**126.4 226.4**

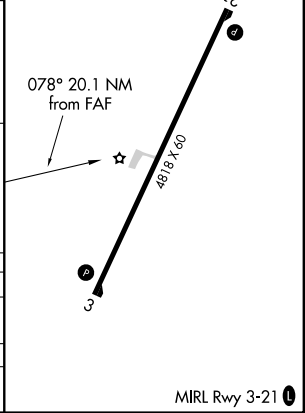
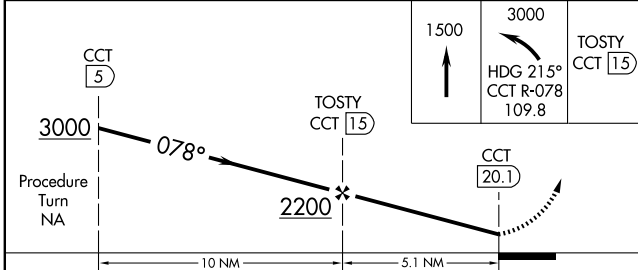
UNICOM  
**122.8 (CTAF) 0**



SE-1, 22 OCT 2009 to 19 NOV 2009

SE-1, 22 OCT 2009 to 19 NOV 2009

ELEV 535



CATEGORY	A	B	C	D
CIRCLING	1060-1 525 (600-1)	1060-1¼ 525 (600-1¼)	NA	
BOWLING GREEN ALTIMETER SETTING MINIMUMS				
CIRCLING	1140-1 605 (700-1)	1140-1¼ 605 (700-1¼)	NA	

MIRL Rwy 3-21 0

HARTFORD, KENTUCKY  
Orig 09127

37°28'N - 86°51'W

HARTFORD / OHIO COUNTY (7K4)  
**VOR/DME-A**