

# GPS RWY 21

HARTFORD / OHIO COUNTY (7K4)

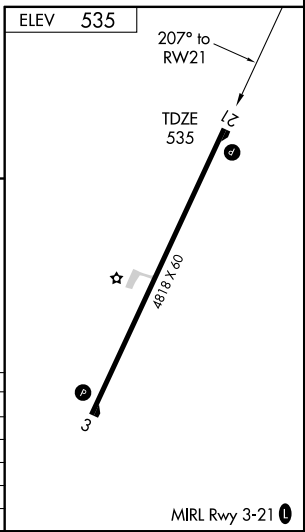
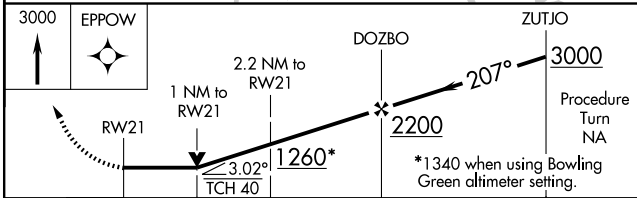
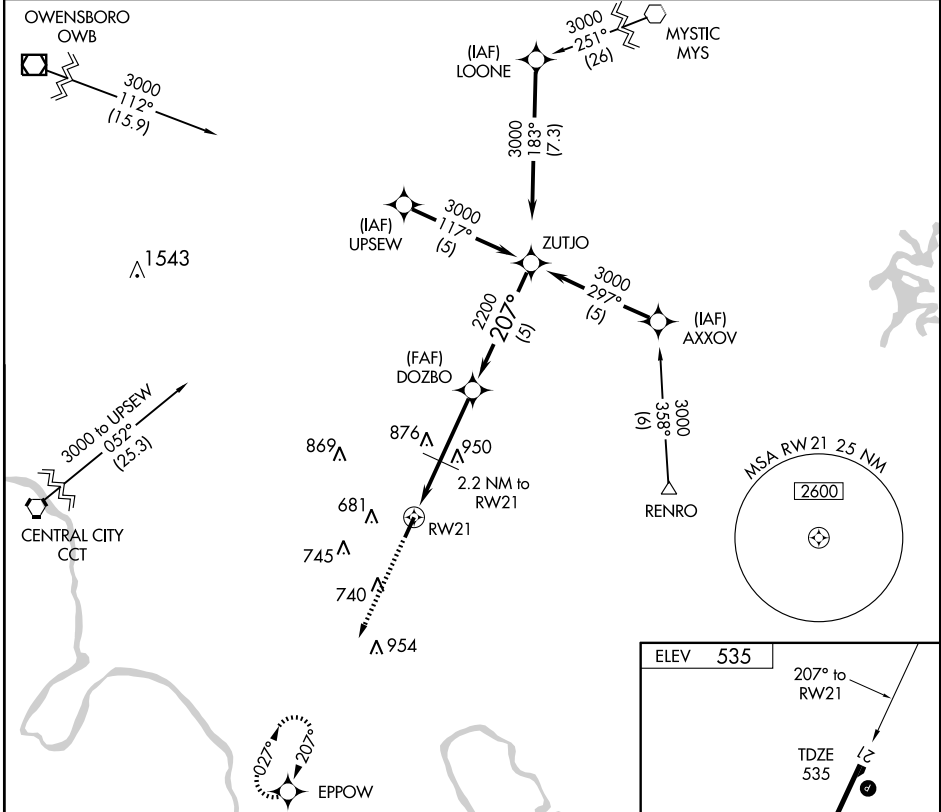
APP CRS <b>207°</b>	Rwy Idg <b>4818</b>
	TDZE <b>535</b>
	Apt Elev <b>535</b>

Obtain local altimeter setting on CTAF; if not received, use Bowling Green altimeter setting. VDP and descent angle/gradient not authorized with Bowling Green altimeter setting.  
 NA

MISSED APPROACH: Climb to 3000 direct EPPOW WP and hold.

EVANSVILLE APP CON ★  
**126.4 226.4**

UNICOM  
**122.8 (CTAF) 0**



CATEGORY	A	B	C	D
S-21	1060-1	525 (600-1)		NA
CIRCLING	1060-1	525 (600-1)		NA
BOWLING GREEN ALTIMETER SETTING MINIMUMS				
S-21	1160-1	625 (700-1)		NA
CIRCLING	1160-1	625 (700-1)		NA

SE-1, 22 OCT 2009 to 19 NOV 2009

SE-1, 22 OCT 2009 to 19 NOV 2009