

TITUSVILLE, FLORIDA

AL-9265 (FAA)

GPS RWY 33

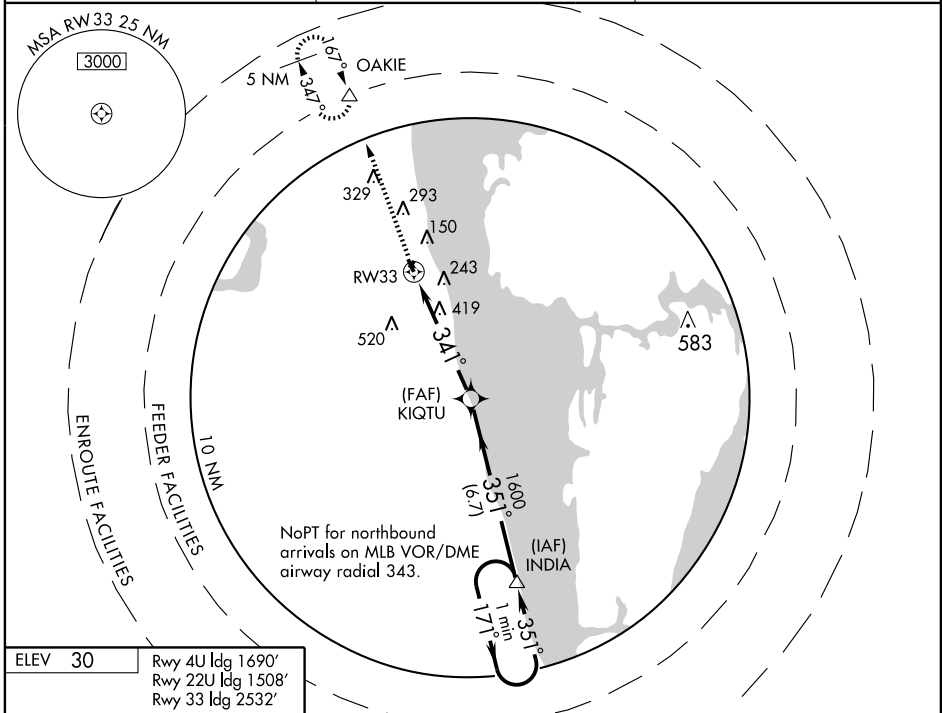
TITUSVILLE/ARTHUR DUNN AIR PARK (X21)

APP CRS 341°	Rwy Idg TDZE Apt Elev	2532 30 30
------------------------	-----------------------------	---------------------------------------

▼ Use Space Coast Rgnl altimeter setting; when not received, use Orlando Intl altimeter setting.

MISSED APPROACH: Climb to 2000 direct OAKIE WP and hold.

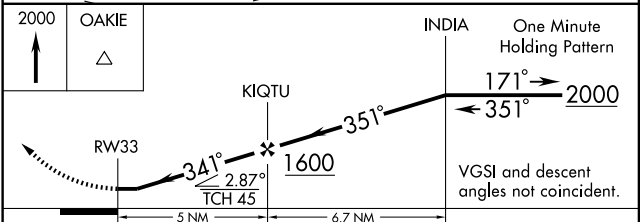
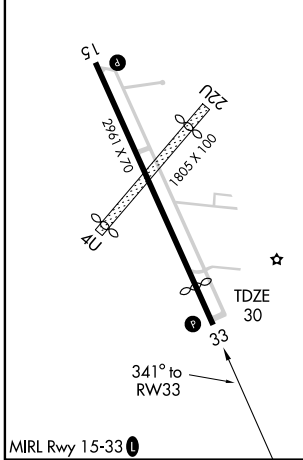
AWOS-3 119.725	ORLANDO APP CON 134.95 281.425	UNICOM 123.0 (CTAF) 0
--------------------------	--	---------------------------------



SE-3, 22 OCT 2009 to 19 NOV 2009

SE-3, 22 OCT 2009 to 19 NOV 2009

ELEV 30	Rwy 4U Idg 1690'
	Rwy 22U Idg 1508'
	Rwy 33 Idg 2532'



CATEGORY	A	B	C	D
S-33	740-1 710 (800-1)		740-2 710 (800-2)	NA
CIRCLING	740-1 710 (800-1)		760-2 730 (800-2)	NA
ORLANDO INTL ALTIMETER SETTING MINIMUMS				
S-33	800-1 770 (800-1)	800-1¼ 770 (800-1¼)	800-2¼ 770 (800-2¼)	NA
CIRCLING	800-1 770 (800-1)	800-1¼ 770 (800-1¼)	800-2¼ 770 (800-2¼)	NA

TITUSVILLE, FLORIDA
Orig-B 08269

28° 37'N-80° 50'W

TITUSVILLE/ARTHUR DUNN AIR PARK (X21)

GPS RWY 33