

RNAV (GPS) Y RWY 9

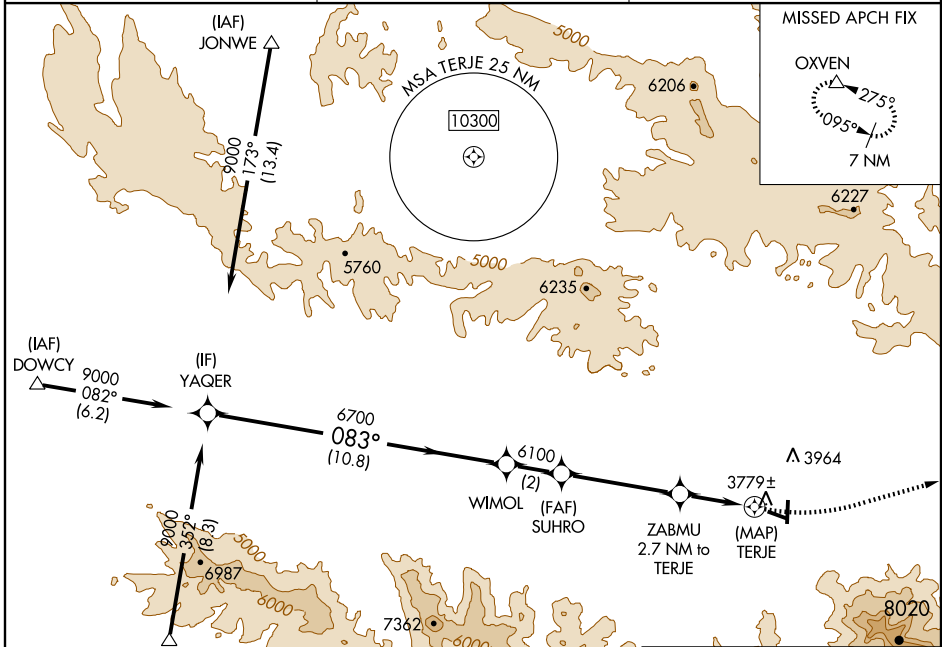
JOHN DAY / GRANT COUNTY RGNL/OGILVIE FIELD (GCD)

APP CRS 083°	Rwy Idg 4471
	TDZE 3669
	Apt Elev 3703

When local alimeter setting not received, procedure NA.
 Circling NA south of Rwy 9-27. DME/DME RNP-0.3 NA.
 Visibility reduction by helicopters NA.

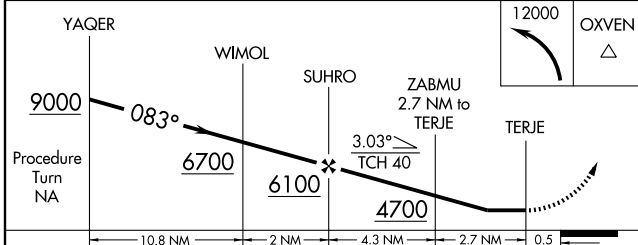
MISSED APPROACH: Climbing left turn to 12000 direct OXVEN and hold, continue climb-in-hold to 12000.

AWOS-3 118.375	SEATTLE CENTER 128.15 257.75	UNICOM 122.8 (CTAF)
--------------------------	--	-------------------------------



NW-1, 22 OCT 2009 to 19 NOV 2009

NW-1, 22 OCT 2009 to 19 NOV 2009



CATEGORY	A	B	C	D
LNAV MDA	4280-1	611 (600-1)	4280-1 ³ / ₄ 611 (600-1 ³ / ₄)	NA
CIRCLING	4280-1 577 (600-1)	4520-1 ¹ / ₄ 817 (900-1 ¹ / ₄)	4520-2 ¹ / ₂ 817 (900-2 ¹ / ₂)	NA

ELEV 3703

REIL Rwy 17
 MIRL Rwy 17-35
 LIRL Rwy 9-27

RNAV (GPS) Y RWY 9