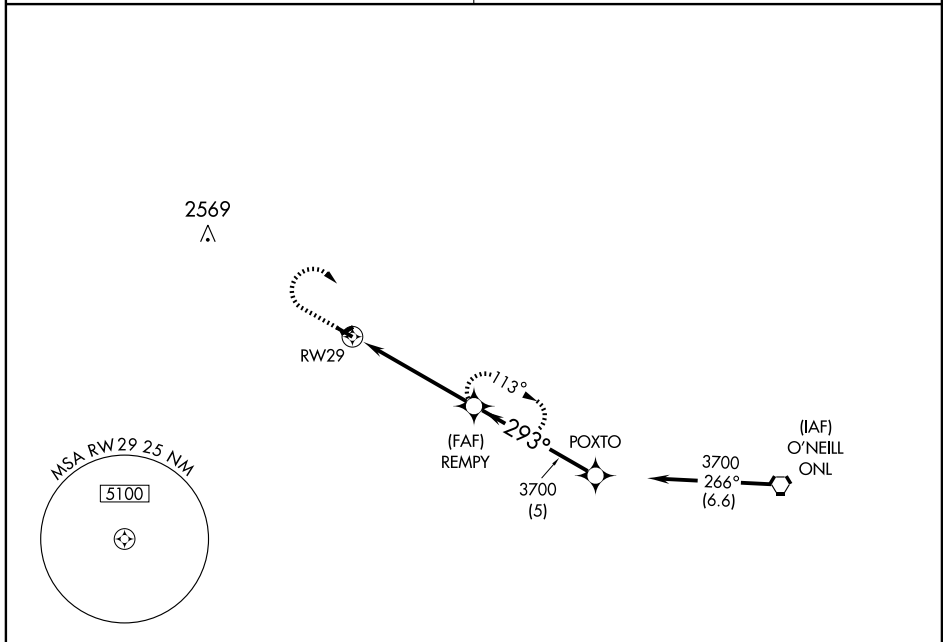


APP CRS 293°	Rwy Idg 3900
	TDZE 2123
	Apt Elev 2128

GPS RWY 29

ATKINSON/ STUART-ATKINSON MUNI (8V2)

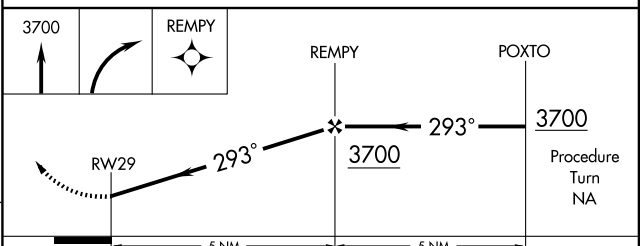
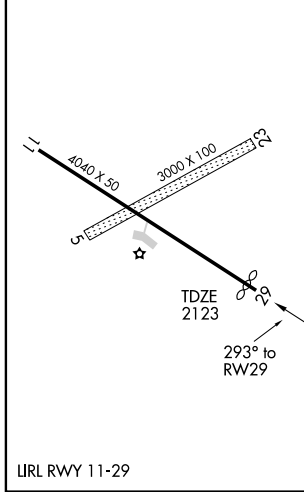
<p>▼ Use O'Neill altimeter setting.</p> <p>▲ NA</p>	<p>MISSED APPROACH: Climb to 3700 then right turn direct REMPY WP and hold.</p>
<p>MINNEAPOLIS CENTER 128.0 385.5</p>	<p>CTAF 122.9</p>



NC-2, 22 OCT 2009 to 19 NOV 2009

NC-2, 22 OCT 2009 to 19 NOV 2009

ELEV 2128	Rwy 29 Idg 3900'
-----------	------------------



CATEGORY	A	B	C	D
S-29	2640-1	517 (600-1)	2640-1½ 517 (600-1½)	NA
CIRCLING	2640-1	512 (600-1)	2640-1½ 512 (600-1½)	NA