

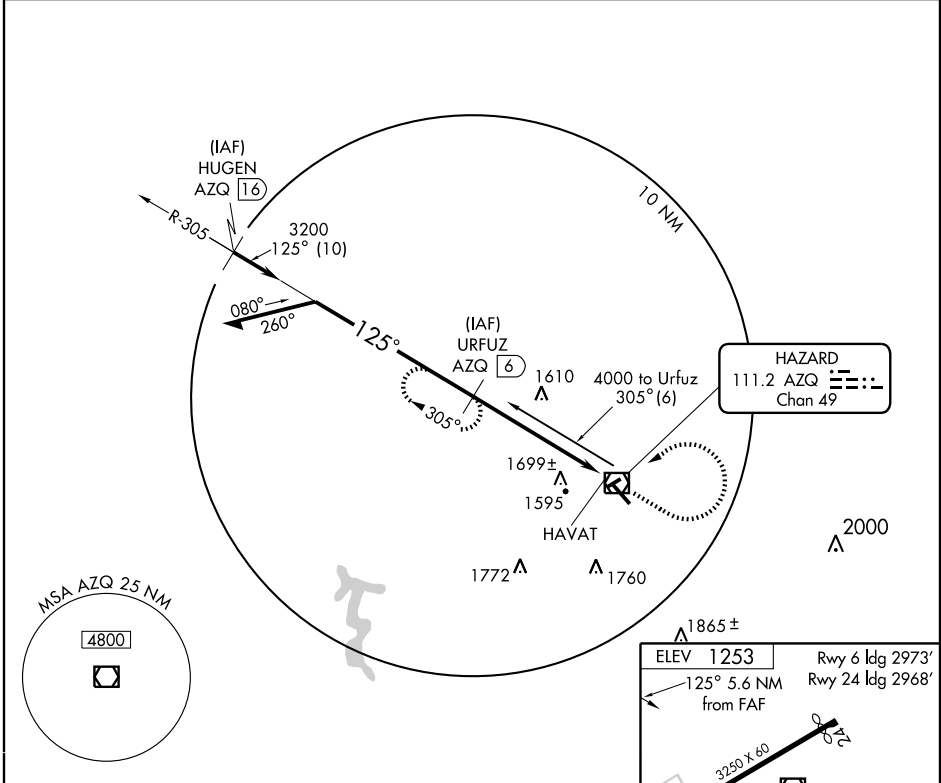
VOR/DME RWY 14  
HAZARD/ WENDELL H. FORD (K20)

VOR/DME AZQ <b>111.2</b> Chan <b>49</b>	APP CRS <b>125°</b>	Rwy ldg TDZE Apt Elev	<b>5500</b> <b>1243</b> <b>1253</b>
---	------------------------	-----------------------------	---

**▽** If local altimeter setting not received, use Julian Carroll altimeter setting and increase all MDAs 60 feet.  
**▲ NA** VDP NA with Julian Carroll altimeter setting.

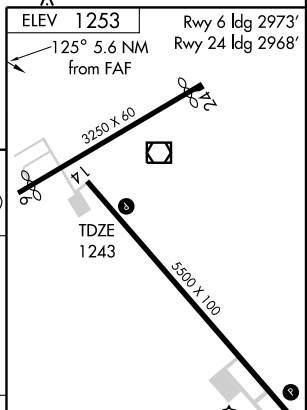
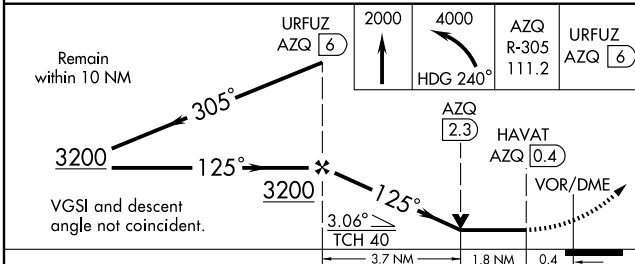
MISSED APPROACH: Climb to 2000 then climbing left turn to 4000 via heading 240° and AZQ R-305 to URFUZ/6 DME and hold.

AWOS-3 <b>119.025</b>	INDIANAPOLIS CENTER <b>126.575 257.850</b>	UNICOM <b>122.7</b> (CTAF) <b>0</b>
--------------------------	---	--



SE-1, 22 OCT 2009 to 19 NOV 2009

SE-1, 22 OCT 2009 to 19 NOV 2009



CATEGORY	A	B	C	D
S-14	1960-1 717 (800-1)		1960-2 717 (800-2)	1960-2 1/4 717 (800-2 1/4)
CIRCLING	2000-1 747 (800-1)	2000-1 1/4 747 (800-1 1/4)	2000-2 1/4 747 (800-2 1/4)	2000-2 1/2 747 (800-2 1/2)

MRL Rwy 14-32 <b>0</b>					
REIL Rws 14 and 32 <b>0</b>					
Knots	60	90	120	150	180
Min:Sec					