

RNAV (GPS) RWY 17

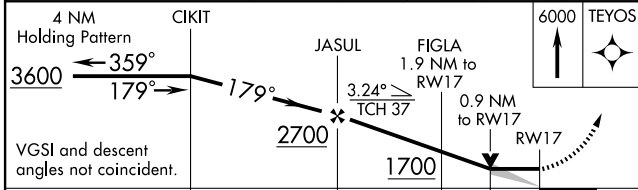
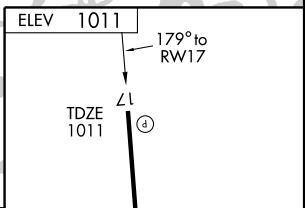
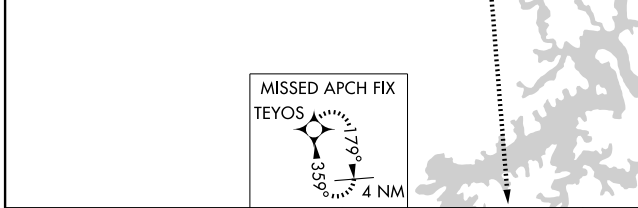
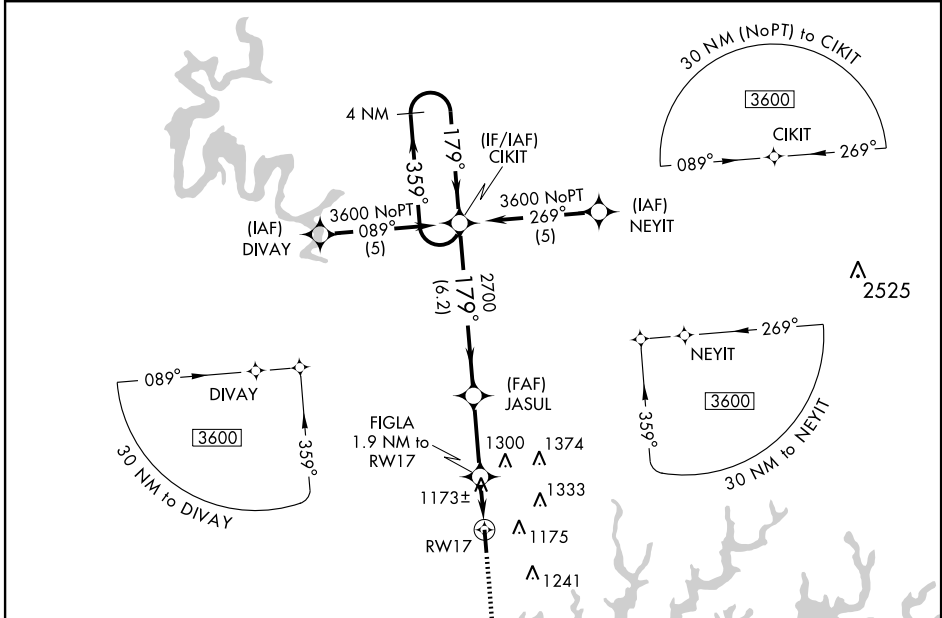
JAMESTOWN/ RUSSELL COUNTY (K24)

APP CRS	Rwy Idg	5000
179°	TDZE	1011
	Apt Elev	1011

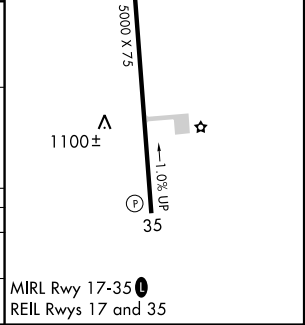
NA If local altimeter setting not received, use Lake Cumberland Rgnl altimeter setting and increase all MDAs 160 feet. Procedure NA at night. VDP NA with Lake Cumberland Rgnl altimeter setting. GPS or RNP-0.3 Required. DME/DME RNP-0.3 NA.

MISSED APPROACH: Climb to 6000 direct TEYOS WP and hold.

AWOS-3 119.6	INDIANAPOLIS CENTER 124.625 371.925	UNICOM 123.0 (CTAF)
------------------------	-----------------------------------------------	-------------------------------



CATEGORY	A	B	C	D
RNAV MDA	1440-1	429 (500-1)	NA	NA
CIRCLING	1540-1 529 (600-1)	1620-1 609 (700-1)	NA	NA



SE-1, 22 OCT 2009 to 19 NOV 2009

SE-1, 22 OCT 2009 to 19 NOV 2009