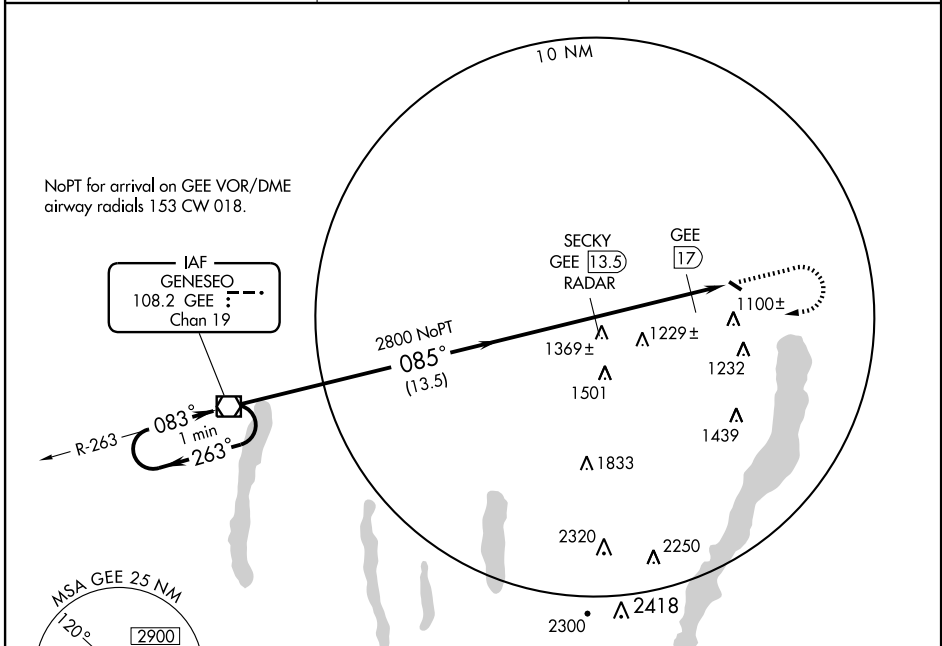


VOR-A
CANANDAIGUA (D38)

VOR/DME GEE 108.2 Chan 19	APP CRS 085°	Rwy Idg TDZE Apt Elev N/A N/A 814
---	------------------------	--

▼ Use Greater Rochester Intl altimeter setting.
▲ NA MISSED APPROACH: Climb to 2000, then climbing right turn to 3000 direct GEE VOR/DME and hold.

AWOS-3 118.675	ROCHESTER APP CON 119.55 269.6	UNICOM 122.8 (CTAF) 0
--------------------------	--	---------------------------------

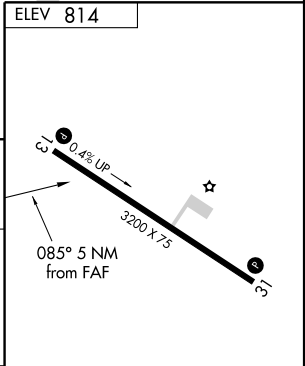
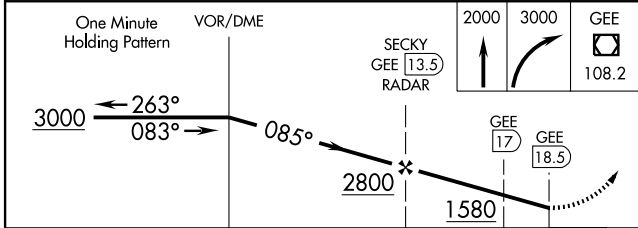


NE-2, 22 OCT 2009 to 19 NOV 2009

NE-2, 22 OCT 2009 to 19 NOV 2009



DME or RADAR REQUIRED



CATEGORY	A	B	C	D
CIRCLING	1580-1 766 (800-1)	1580-1¼ 766 (800-1¼)	1580-2¼ 766 (800-2¼)	NA
DME MINIMUMS				
CIRCLING	1540-1 726 (800-1)	1540-2 726 (800-2)	NA	NA

FAF to MAP 5 NM					
Knots	60	90	120	150	180
Min:Sec	5:00	3:20	2:30	2:00	1:40