

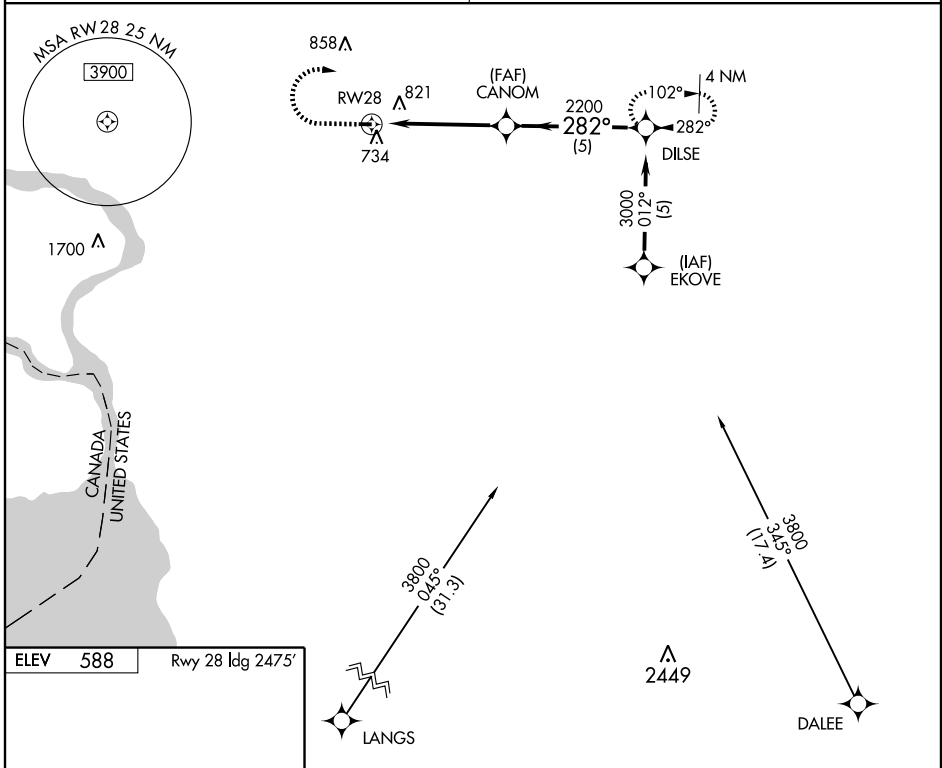
# RNAV (GPS) RWY 28

LOCKPORT / NORTH BUFFALO SUBURBAN (0G0)

|                        |                        |
|------------------------|------------------------|
| APP CRS<br><b>282°</b> | Rwy Idg<br><b>2475</b> |
|                        | TDZE<br><b>588</b>     |
|                        | Apt Elev<br><b>588</b> |

|  |   |
|--|---|
| <p><b>▽</b> GPS or RNP-0.3 required. DME/DME RNP-0.3 NA<br/>                 Use Buffalo Niagara Intl altimeter setting.<br/> <b>▲</b> NA Procedure not authorized at night.</p> | <p>MISSED APPROACH: Climb to 1800, then climbing right turn to 3000 direct DILSE WP and hold.</p> |
|--|---|

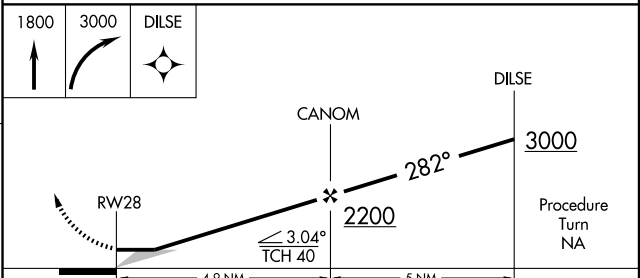
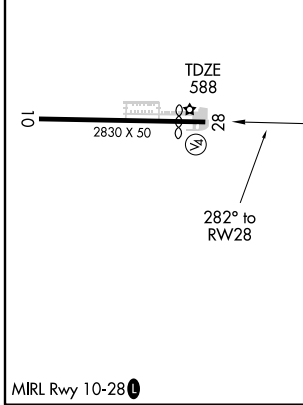
|  |  |
|--|--|
| <p>BUFFALO APP CON<br/> <b>126.5 317.6</b></p> | <p>UNICOM<br/> <b>123.0 (CTAF) 0</b></p> |
|--|--|



NE-2, 22 OCT 2009 to 19 NOV 2009

NE-2, 22 OCT 2009 to 19 NOV 2009

|          |                  |
|----------|------------------|
| ELEV 588 | Rwy 28 Idg 2475' |
|----------|------------------|



| CATEGORY | A      | B           | C  | D |
|----------|--------|-------------|----|---|
| LNAV MDA | 1120-1 | 532 (600-1) | NA |   |
| CIRCLING | 1180-1 | 592 (600-1) | NA |   |