

WAAS CH 97408 W23A	APP CRS 225°	Rwy Idg TDZE Apt Elev	5500 18 18
--	------------------------	-----------------------------	---------------------------------------

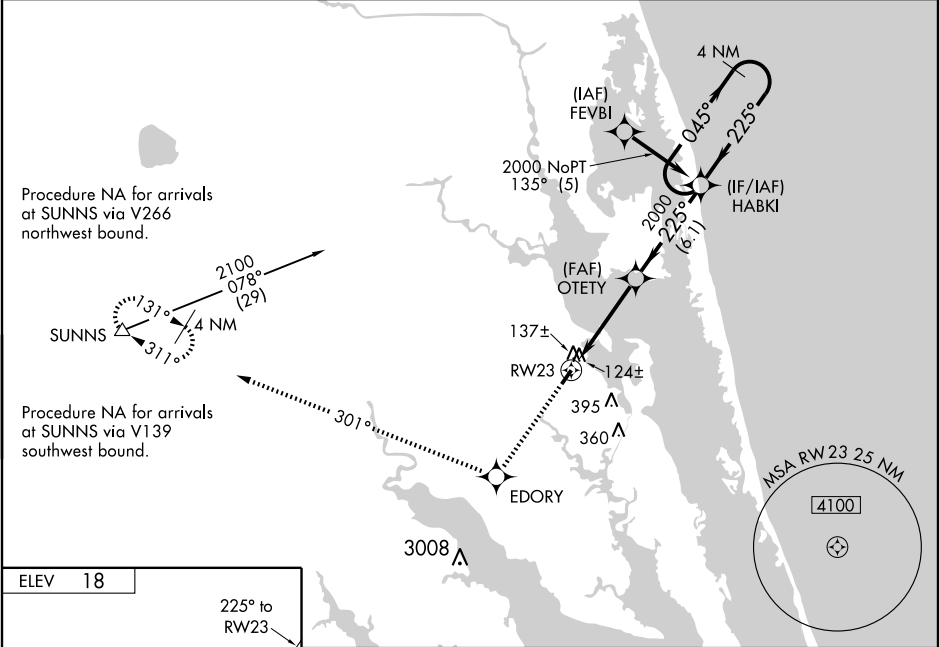
RNAV (GPS) RWY 23

CURRITUCK COUNTY RGNL (ONX)

⚠ For uncompensated Baro-VNAV systems, LNAV/VNAV NA below -15°C (5° F) or above 49°C (120°F). DME/DME RNP-0.3 NA. Visibility reduction by helicopters NA. Baro-VNAV NA when using Oceana NAS/Apollo Soucek altimeter setting. VDP NA when using Oceana NAS/Apollo Soucek altimeter setting. When local altimeter setting not received, use Oceana NAS/Apollo Soucek altimeter setting and increase all DA 59 feet and all MDA 60 feet; increase LPV visibility and LNAV/VNAV visibility ¼ mile and LNAV Cat. C and D visibility ½ mile.

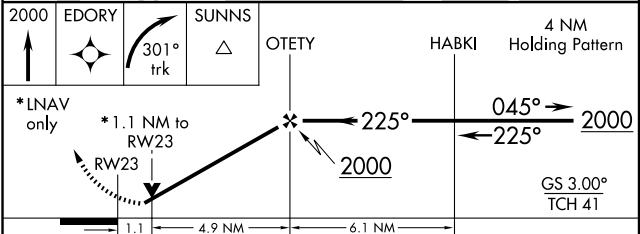
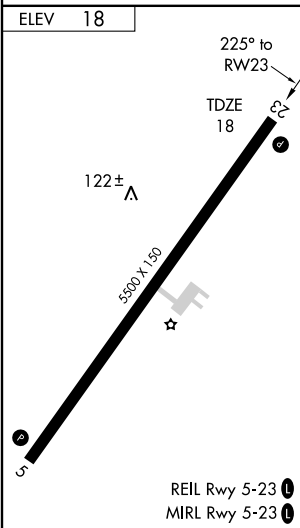
MISSED APPROACH: Climb to 2000 direct EDORY and right turn via 301° track to SUNNS and hold.

AWOS-3 119.775	OCEANA APP CON 123.9 266.8	CTAF 122.9 0
--------------------------	--------------------------------------	------------------------



SE-2, 22 OCT 2009 to 19 NOV 2009

SE-2, 22 OCT 2009 to 19 NOV 2009



CATEGORY	A	B	C	D
LPV DA		384-1¼	366 (400-1¼)	
LNAV/VNAV DA		424-1½	406 (500-1½)	
LNAV MDA		400-1	382 (400-1)	400-1¼ 382 (400-1¼)
CIRCLING	440-1 422 (500-1)	480-1 462 (500-1)	480-1½ 462 (500-1½)	580-2 562 (600-2)