

TAMPA, FLORIDA

AL-9241 (FAA)

LOC/DME I-VDF <b>111.35</b> Chan <b>50 (Y)</b>	APP CRS <b>226°</b>	Rwy Idg <b>4200</b> TDZE <b>21</b> Apt Elev <b>22</b>
--	------------------------	---

# ILS or LOC RWY 23

TAMPA EXECUTIVE (VDF)

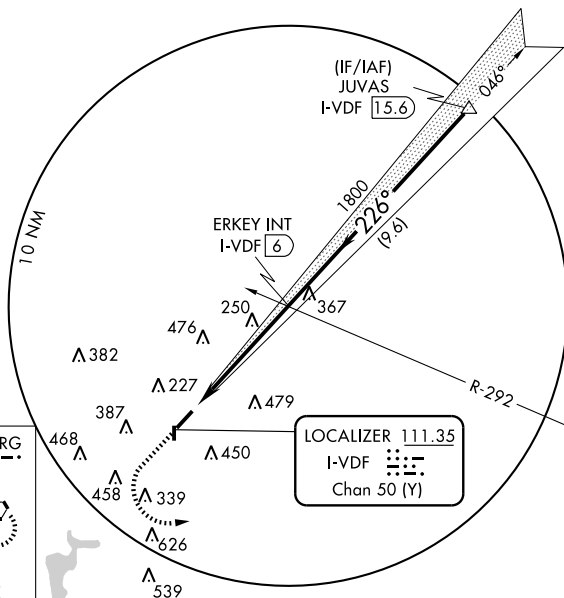
**⚠** If local altimeter setting not received, use Tampa Intl altimeter setting and increase DA to 305, and all MDAs 40 feet. For inoperative **MALSR**, increase S-LOC 23 Cat. A and B visibility to 1. VDP NA when using Tampa Intl altimeter setting.

**MALSR** MISSED APPROACH: Climb to 800 then climbing left turn to 2000 direct LAL VORTAC and hold.

AWOS-3 <b>121.125</b>	TAMPA APP CON <b>119.9 290.3</b>	UNICOM <b>122.7 (CTAF) 0</b>
--------------------------	-------------------------------------	---------------------------------

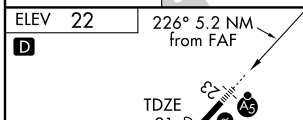
SE-3, 22 OCT 2009 to 19 NOV 2009

SE-3, 22 OCT 2009 to 19 NOV 2009

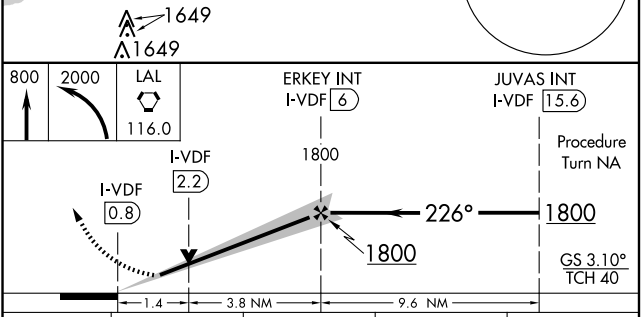


ST. PETERSBURG  
116.4 PIE  
Chan 111  
R-270  
090°  
270°

ALTERNATE MISSED APCH FIX



ELEV 22	226° 5.2 NM from FAF
TDZE 21	
81	
36	
REIL Rwy 5, 23, 18, and 36	
MRL Rwy 5-23 and 18-36	
FAF to MAP 5.2 NM	
Knots	60 90 120 150 180
Min:Sec	5:12 3:28 2:36 2:05 1:44



CATEGORY	A	B	C	D
S-ILS 23	280- <sup>3</sup> / <sub>4</sub>	259 (300- <sup>3</sup> / <sub>4</sub> )		NA
S-LOC 23	500- <sup>3</sup> / <sub>4</sub>	479 (500- <sup>3</sup> / <sub>4</sub> )		NA
CIRCLING	540-1 518 (600-1)	760-1 738 (800-1)	760-2 738 (800-2)	NA

TAMPA, FLORIDA  
Orig 09239

28°01'N - 82°21'W

# TAMPA EXECUTIVE (VDF)

## ILS or LOC RWY 23