

TAMPA, FLORIDA

AL-9241 (FAA)

GPS RWY 18

TAMPA EXECUTIVE (VDF)

APP CRS	Rwy Idg	3219
184°	TDZE	20
	Apt Elev	22

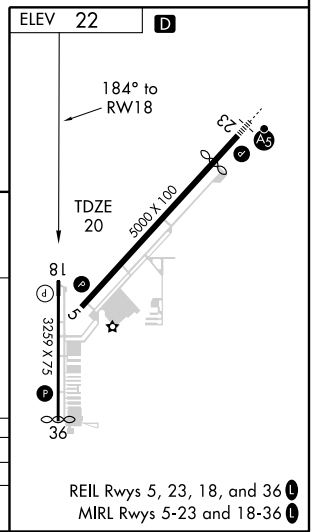
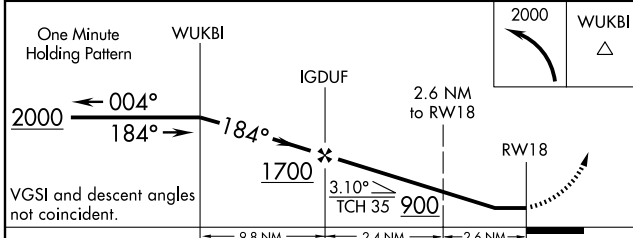
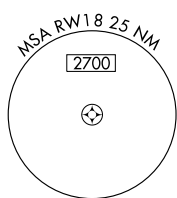
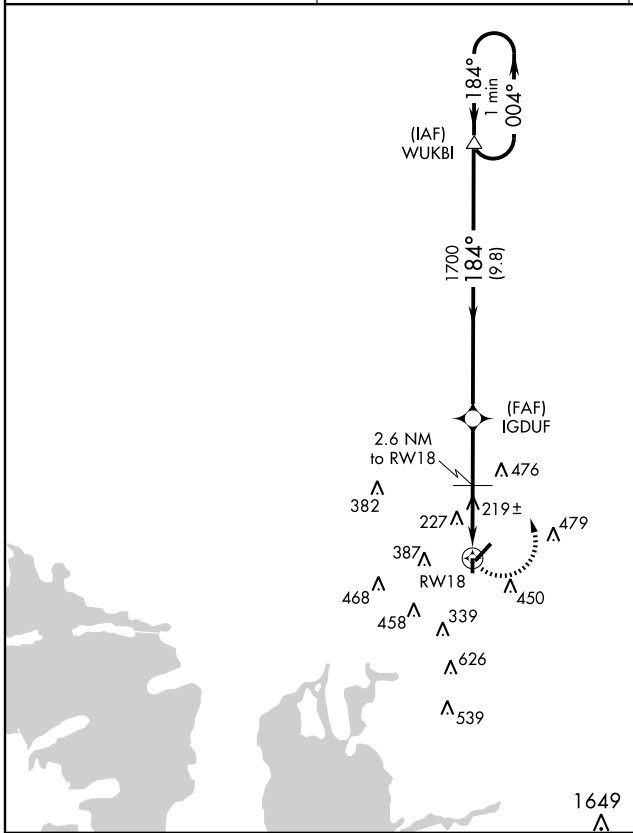
NA If local altimeter setting not received, use Tampa Intl altimeter setting and increase all MDA's 40 feet.

MISSED APPROACH: Climbing left turn to 2000 direct WUKBI WP and hold.

AWOS-3
121.125

TAMPA APP CON
119.9 290.3

UNICOM
122.7 (CTAF)



CATEGORY	A	B	C	D
S-18	580-1	560 (600-1)		NA
CIRCLING	580-1 558 (600-1)	820-1¼ 798 (800-1¼)		NA

TAMPA, FLORIDA
Amdt 1C 09295

28°01'N - 82°21'W

TAMPA EXECUTIVE (VDF)

GPS RWY 18

SE-3, 22 OCT 2009 to 19 NOV 2009

SE-3, 22 OCT 2009 to 19 NOV 2009