

# GPS RWY 1

GRAND CANYON/ VALLE (40G)

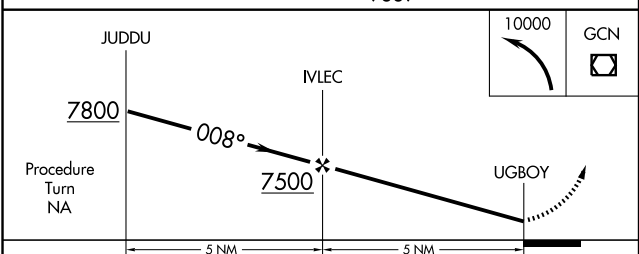
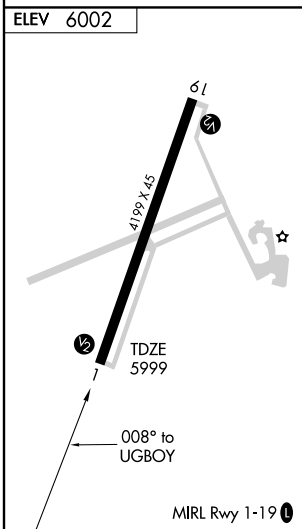
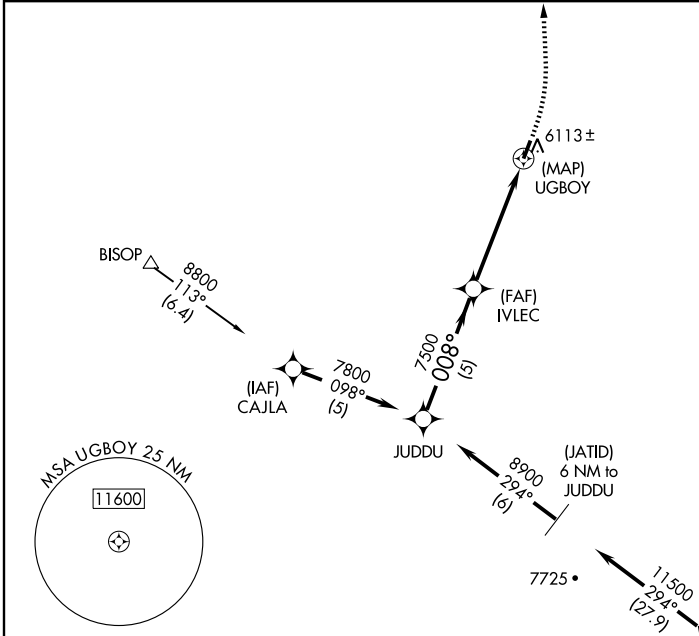
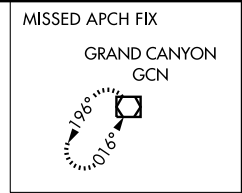
APP CRS <b>008°</b>	Rwy Idg <b>4199</b>
	TDZE <b>5999</b>
	Apt Elev <b>6002</b>

**NA IAF** ARM APPROACH MODE PRIOR TO IAF.  
Obtain local altimeter setting on CTAF; when not received use Grand Canyon National Park altimeter setting. When neither received procedure not authorized.

MISSED APPROACH: Climbing left turn to 10000 direct to GCN VOR/DME and hold.

LOS ANGELES CENTER  
**124.85 319.2**

UNICOM  
**122.8 (CTAF)**



CATEGORY	A	B	C	D
S-1	6480-1	481 (500-1)	6480-1¼ 481 (500-1¼)	NA
CIRCLING	6480-1	478 (500-1)	6500-1½ 498 (500-1½)	NA
<b>GRAND CANYON NATIONAL PARK ALTIMETER SETTING MINIMUMS</b>				
S-1	6620-1	621 (700-1)	6620-1¾ 621 (700-1¾)	NA
CIRCLING	6620-1	618 (700-1)	6640-1¾ 638 (700-1¾)	NA

# GPS RWY 1

SW-4, 22 OCT 2009 to 19 NOV 2009

SW-4, 22 OCT 2009 to 19 NOV 2009