

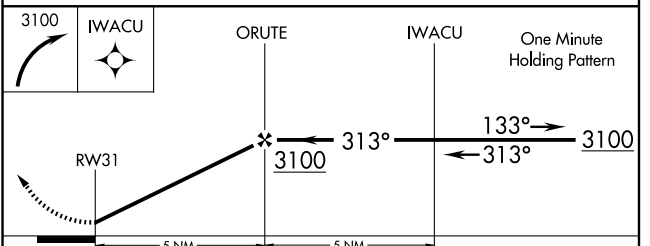
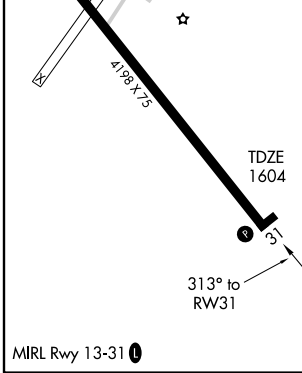
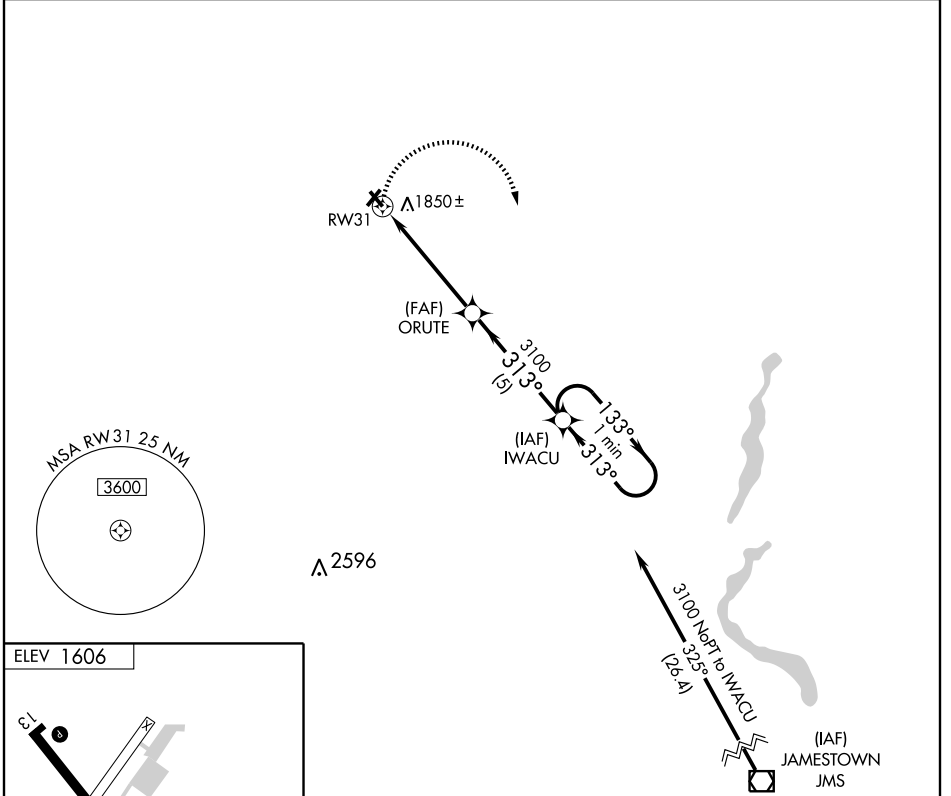
# GPS RWY 31

CARRINGTON MUNI (46D)

APP CRS <b>313°</b>	Rwy Idg <b>4198</b>
	TDZE <b>1604</b>
	Apt Elev <b>1606</b>

▲ NA	Use Jamestown altimeter setting. Procedure NA at night.	MISSED APPROACH: Climbing right turn to 3100 direct IWACU WP and hold.

AWOS-3 <b>118.575</b>	MINNEAPOLIS CENTER <b>124.2 270.3</b>	CTAF <b>122.9</b>
--------------------------	--	----------------------



CATEGORY	A	B	C	D
S-31	2200-1	596 (600-1)	2200-1½ 596 (600-1½)	NA
CIRCLING	2300-1	694 (700-1)	2300-2 694 (700-2)	NA

NC-1, 22 OCT 2009 to 19 NOV 2009

NC-1, 22 OCT 2009 to 19 NOV 2009