

# RNAV (GPS)-A KUTZTOWN (N31)

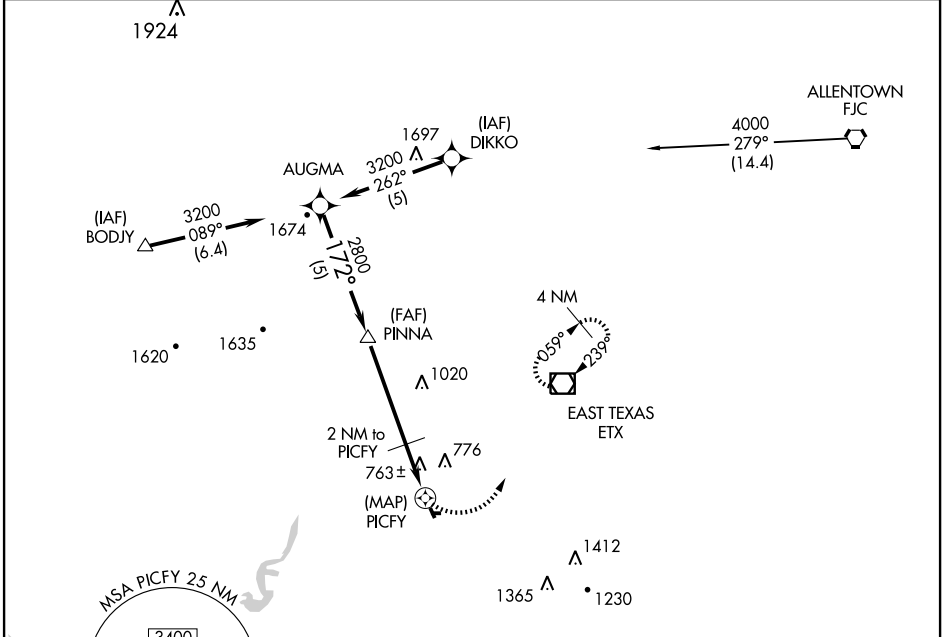
APP CRS <b>172°</b>	Rwy ldg TDZE Apt Elev	<b>N/A</b> <b>N/A</b> <b>512</b>
------------------------	-----------------------------	--

**NA** Obtain local altimeter setting on CTAF; when not received use Allentown/Lehigh Valley Intl altimeter setting. GPS or RNP-0.3 required. DME/DME RNP-0.3 NA.

**MISSED APPROACH:** Climbing left turn to 3000 direct ETX VOR/DME and hold.

ALLENTOWN APP CON  
**118.2 397.9**

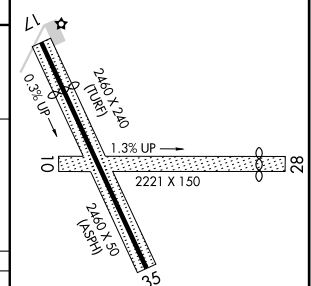
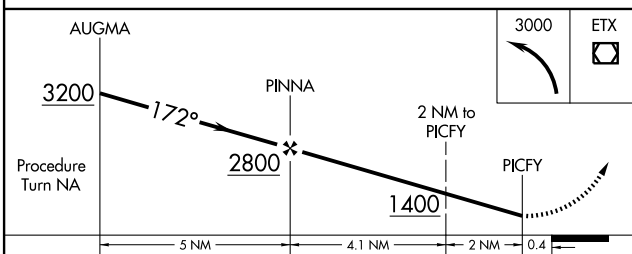
UNICOM  
**123.0 (CTAF)**



NE-4, 22 OCT 2009 to 19 NOV 2009

NE-4, 22 OCT 2009 to 19 NOV 2009

ELEV 512	Rwy 17 ldg 2040'
	Rwy 28 ldg 1926'
	Λ 646



CATEGORY	A	B	C	D
CIRCLING	1080-1 568 (600-1)		NA	
ALLENTOWN/LEHIGH VALLEY INTL ALTIMETER SETTING MINIMUMS				
CIRCLING	1140-1 628 (700-1)		NA	

LIRL Rwy 17-35