

RNAV (GPS) RWY 11

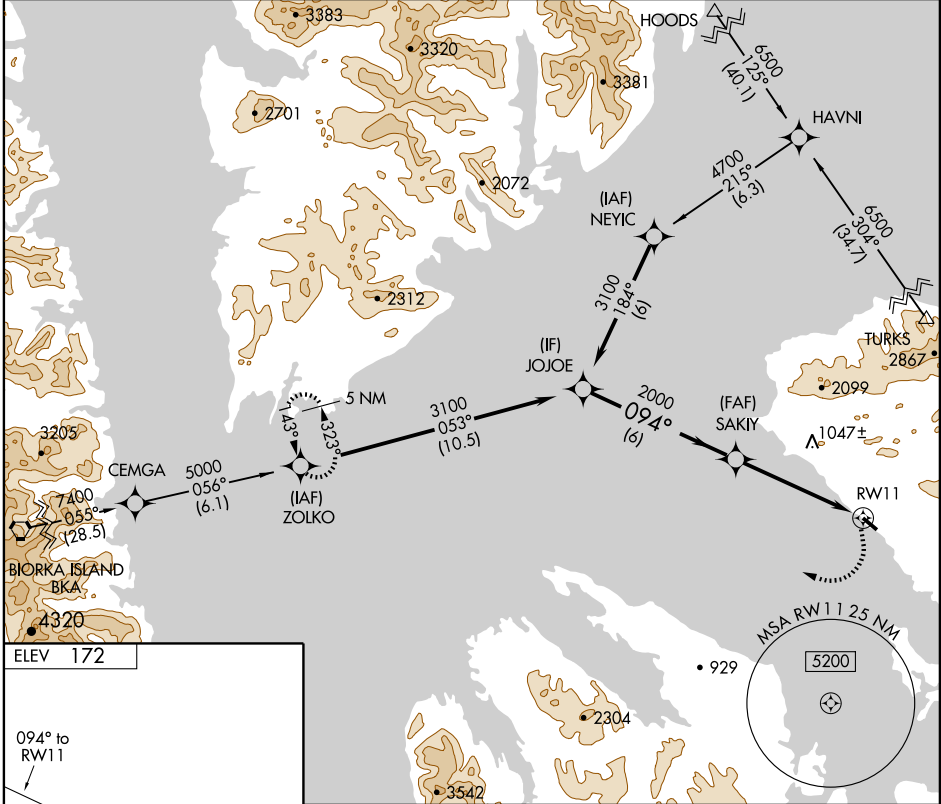
KAKE (AFE)(PAFE)

APP CRS 094°	Rwy Idg 4000
	TDZE 166
	Apt Elev 172

▼ When VGSJ inoperative, procedure NA at night. Circling NA north of Rwy 11-29. DME/DME RNP-0.3 NA. Visibility reduction by helicopters NA. When local altimeter setting not received, use Petersburg James A. Johnson altimeter setting and increase all MDAs 100 feet.

MISSED APPROACH: Climbing right turn to 5000 direct ZOLKO and hold.

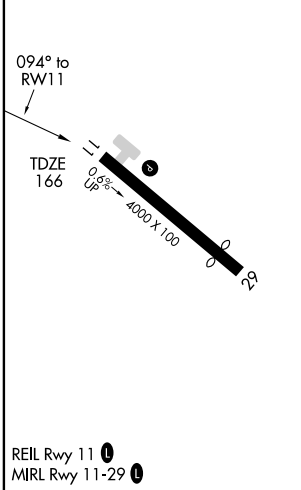
AWOS-3 135.25	ANCHORAGE CENTER 132.175	SITKA RADIO 121.3 122.65	CTAF 122.9
-------------------------	------------------------------------	------------------------------------	----------------------



AK, 22 OCT 2009 to 17 DEC 2009

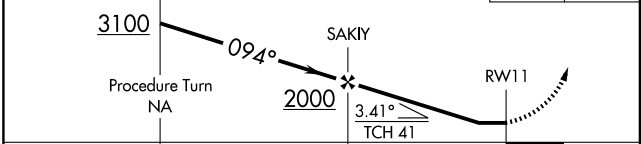
AK, 22 OCT 2009 to 17 DEC 2009

ELEV 172



REIL Rwy 11 **①**
MIRL Rwy 11-29 **①**

VGSJ and descent angles not coincident



CATEGORY	A	B	C	D
LNAV MDA	1120-1¼ 954 (1000-1¼)	1120-1½ 954 (1000-1½)	1120-3 954 (1000-3)	NA
CIRCLING	1120-1¼ 948 (1000-1¼)	1120-1½ 948 (1000-1½)	1120-3 948 (1000-3)	NA