

KAKE, ALASKA

AL-9231 (FAA)

NDB/DME RWY 11

KAKE (AFE)(PAFE)

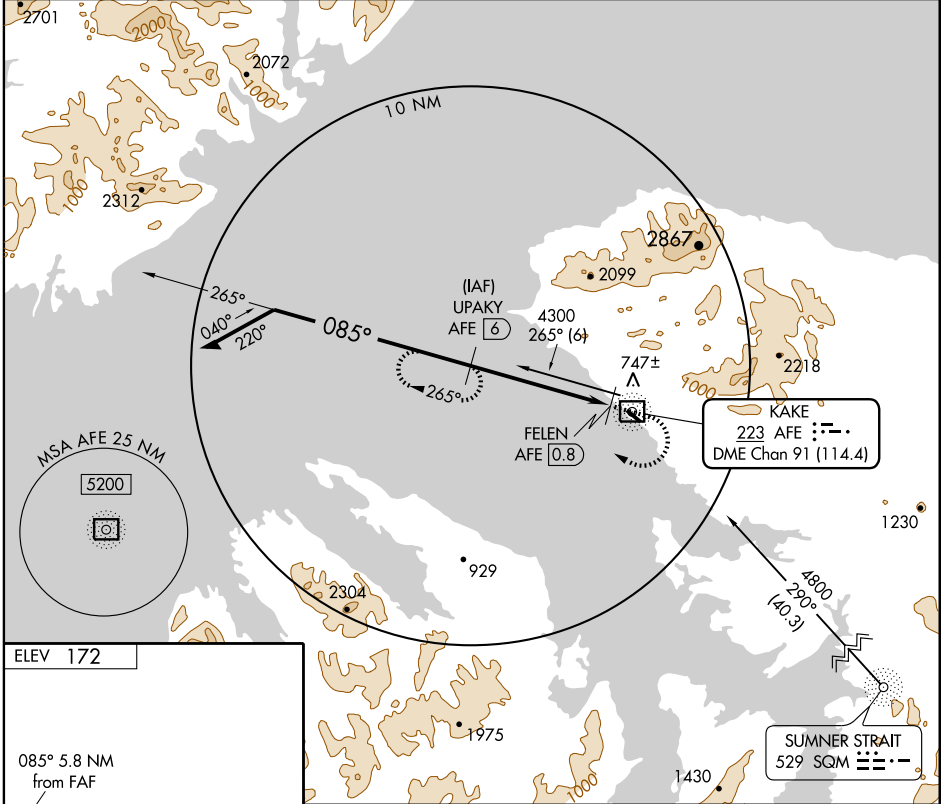
NDB/DME AFE 223	APP CRS 085°	Rwy Idg 4000 TDZE 166 Apt Elev 172
Chan 91 (114.4)		

▼ When VGSI inoperative, procedure NA at night. Circling NA north of Rwy 11-29. Visibility reduction by helicopters NA. When local altimeter setting not received, use Petersburg James A. Johnson altimeter setting and increase all MDAs 100 feet, and increase Cats B and C visibility 1/4 mile.

▲

MISSED APPROACH: Climb to 1200 then climbing right turn to 4300 via heading 325° and AFE bearing 265° to UPAKY/6 DME and hold.

AWOS-3 135.25	ANCHORAGE CENTER 132.175	SITKA RADIO 121.3 122.65	CTAF 122.9 0
-------------------------	------------------------------------	------------------------------------	------------------------



AK, 22 OCT 2009 to 17 DEC 2009

AK, 22 OCT 2009 to 17 DEC 2009

ELEV 172

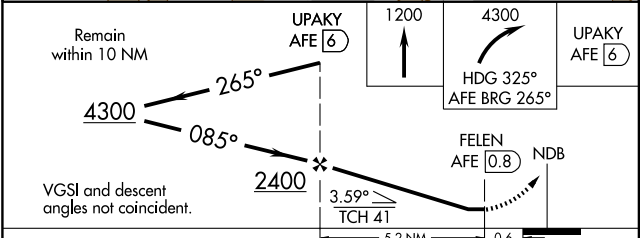
085° 5.8 NM from FAF

TDZE 166

0.5% - 400 x 100

REIL RWY 11 0

MIRL RWY 11-29 0



CATEGORY	A	B	C	D
S-11	1100-1¼ 934 (1000-1¼)		1100-2¾ 934 (1000-2¾)	NA
CIRCLING	1100-1¼ 928 (1000-1¼)		1100-2¾ 928 (1000-2¾)	NA

KAKE, ALASKA
Amdt 1 09015

56° 58' N-133° 55' W

KAKE (AFE)(PAFE) NDB/DME RWY 11