

KLAWOCK, ALASKA

AL-9230 (FAA)

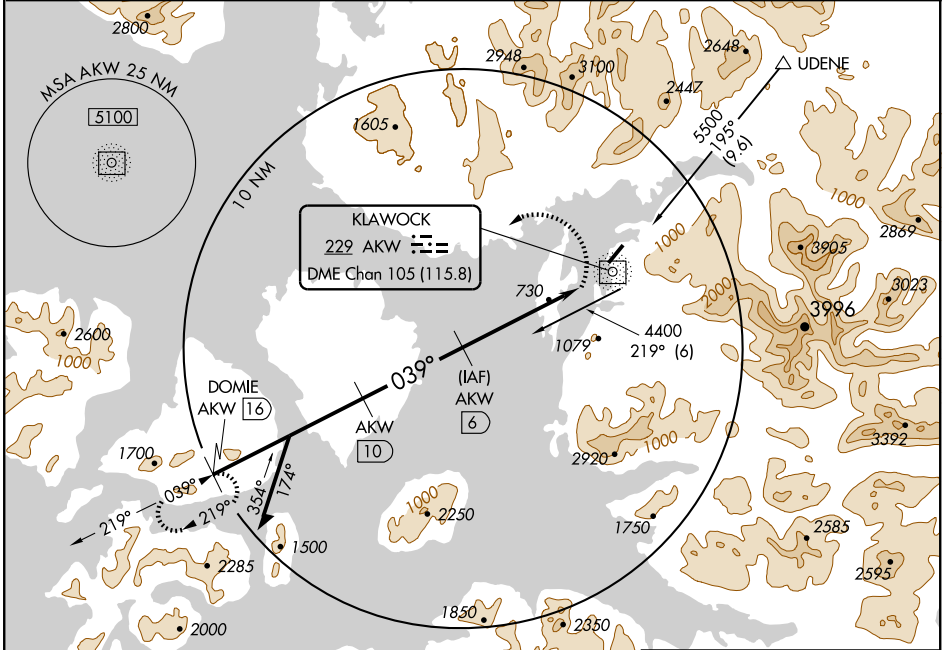
NDB/DME RWY 2 KLAWOCK (AKW) (PAKW)

NDB/DME AKW 229	APP CRS 039°	Rwy Idg TDZE Apt Elev	5000 57 80
Chan 105 (115.8)			

▼ Circling not authorized east of Rwy 2-20.

MISSED APPROACH: Climbing left turn to 3400 to intercept AKW 219° bearing to DOMIE/16 DME and hold.

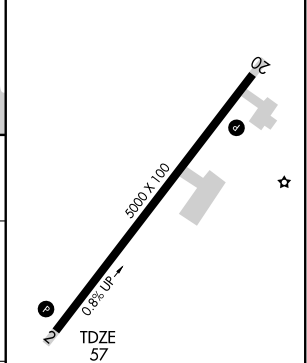
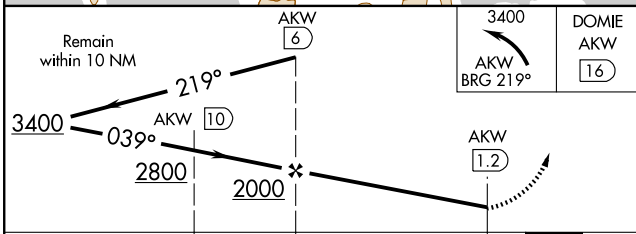
ASOS 135.45	ANCHORAGE CENTER 118.5 284.6	KETCHIKAN RADIO 122.25 0	CTAF 120.9
-----------------------	--	---	----------------------



AK, 22 OCT 2009 to 17 DEC 2009

AK, 22 OCT 2009 to 17 DEC 2009

ELEV 80



CATEGORY	A	B	C	D
S-2	1280-1½	1223 (1200-1½)	1280-3 1223 (1200-3)	NA
CIRCLING	1280-1½	1200 (1200-1½)	1280-3 1200 (1200-3)	NA

REIL Rws 2 and 20 MIRL Rwy 2-20 0					
Knots	60	90	120	150	180
Min:Sec					

KLAWOCK, ALASKA
Orig-B 07130

55° 35' N-133° 05' W

KLAWOCK (AKW) (PAKW) NDB/DME RWY 2