

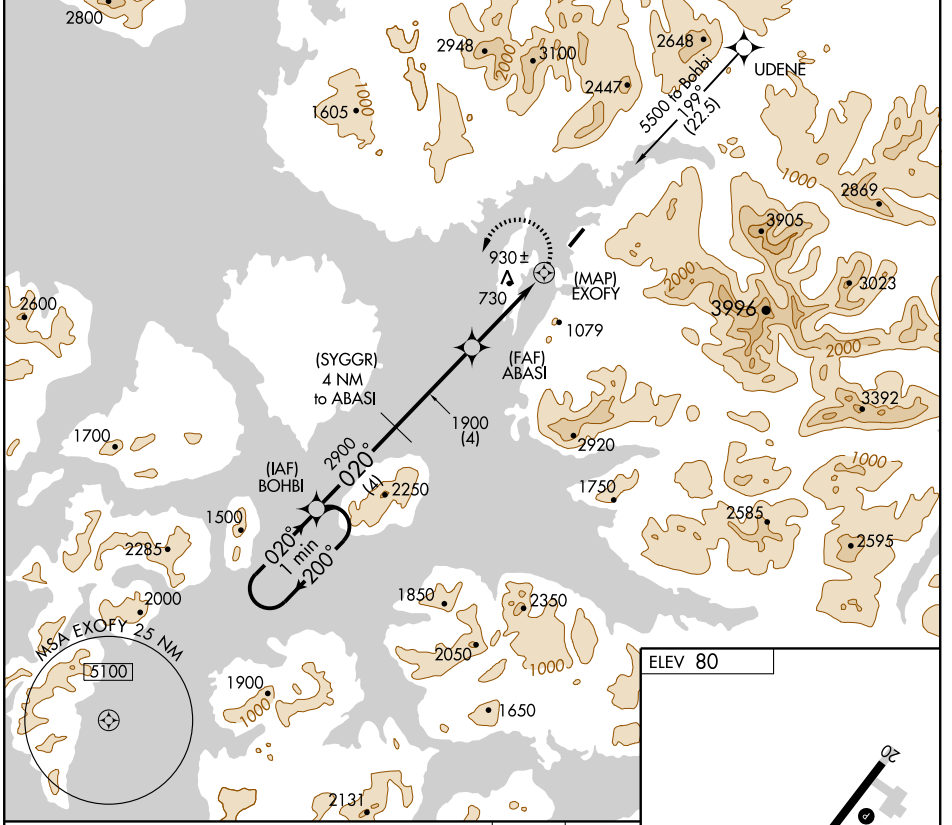
# GPS RWY 2

KLAWOCK (AKW) (PAKW)

APP CRS	Rwy Idg	<b>5000</b>
<b>020°</b>	TDZE	<b>57</b>
	Apt Elev	<b>80</b>

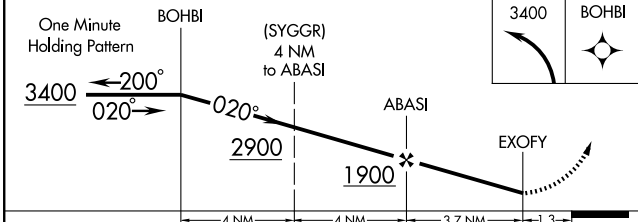
▼ Circling not authorized east of Rwy 2-20.  
 ▲ NA  
 MISSED APPROACH: Climbing left turn to 3400 direct BOHBI and hold.

ASOS <b>135.45</b>	ANCHORAGE CENTER <b>118.5 284.6</b>	KETCHIKAN RADIO <b>122.25</b>	CTAF <b>120.9</b>
-----------------------	--	----------------------------------	----------------------



AK, 22 OCT 2009 to 17 DEC 2009

AK, 22 OCT 2009 to 17 DEC 2009



ELEV 80

REIL Rwy 2 and 20  
 MIRL Rwy 2-20

CATEGORY	A	B	C	D
S-2	1180-1½ 1123 (1100-1½)		1180-3 1123 (1100-3)	NA
CIRCLING	1180-1½ 1100 (1100-1½)		1180-3 1100 (1100-3)	NA