

| | | | |
|--|------------------------|---|---|
| WAAS CH 86409 W36A | APP CRS 004° | Rwy Idg TDZE 776 Apt Elev 777 | 5504 776 777 |
|--|------------------------|---|---|

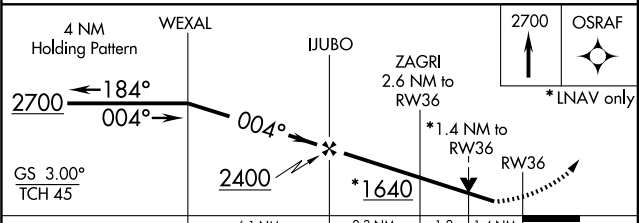
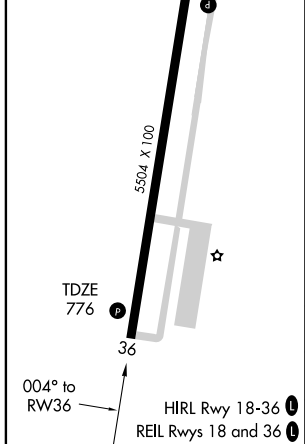
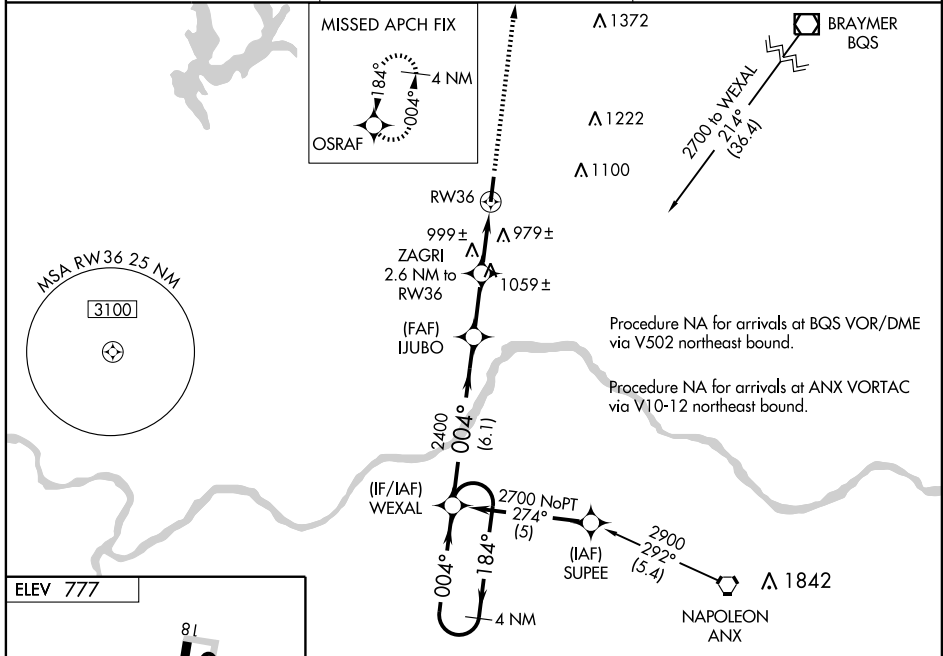
RNAV (GPS) RWY 36

MOSBY/ MIDWEST NATIONAL AIR CENTER (GPH)

⚠ **NA** DME/DME RNP-0.3 NA. Baro-VNAV NA when using Kansas City Intl altimeter setting. For uncompensated Baro-VNAV systems, LNAV/VNAV NA below -16°C (4°F) or above 54°C (130°F). Visibility reduction by helicopters NA. Obtain local altimeter setting on CTAF; when not received use Kansas City Intl altimeter setting and increase all DA 79 feet and all LPV and LNAV/VNAV visibilities ¼ mile; increase all MDA 80 feet and LNAV and Circling Cat C visibility ¼ mile. VDP NA when using Kansas City Intl altimeter setting.

MISSED APPROACH: Climb to 2700 direct OSRAF and hold.

| | | |
|-------------------------------------|--------------------------|-------------------------------|
| KANSAS CITY APP CON 118.4 | CLNC DEL 118.2 | UNICOM 122.7 (CTAF) |
|-------------------------------------|--------------------------|-------------------------------|



| CATEGORY | A | B | C | D |
|---------------|---------|--------------|-------------------------|----|
| LPV DA | 1105-1¼ | 329 (400-1¼) | | NA |
| LNAV/ VNAV DA | 1341-2 | 565 (600-2) | | NA |
| LNAV MDA | 1260-1 | 484 (500-1) | 1260-1¼ 484 (500-1¼) | NA |
| CIRCLING | 1300-1 | 523 (600-1) | 1320-1½ 543 (600-1½) | NA |

NC-3, 22 OCT 2009 to 19 NOV 2009

NC-3, 22 OCT 2009 to 19 NOV 2009