

RNAV (GPS) RWY 18

MOSBY/MIDWEST NATIONAL AIR CENTER (GPH)

WAAS CH 70323 W18A	APP CRS 184°	Rwy Idg TDZE 777 Apt Elev 777	5504
---------------------------------	------------------------	---	-------------

⚠ For uncompensated Baro-VNAV systems, LNAV/VNAV NA below -1.6°C (4°F) or above 54°C (130°F). DME/DME RNP-0.3 NA.
⚠ Baro-VNAV and VDP NA when using Kansas City Intl altimeter setting. Obtain local altimeter setting on CTAF; when not received, use Kansas City Intl altimeter setting and increase all DAs 79 feet and all LPV and LNAV/VNAV visibilities ¼ mile; increase all MDAs 80 feet and circling visibility Cat C ¼ mile.

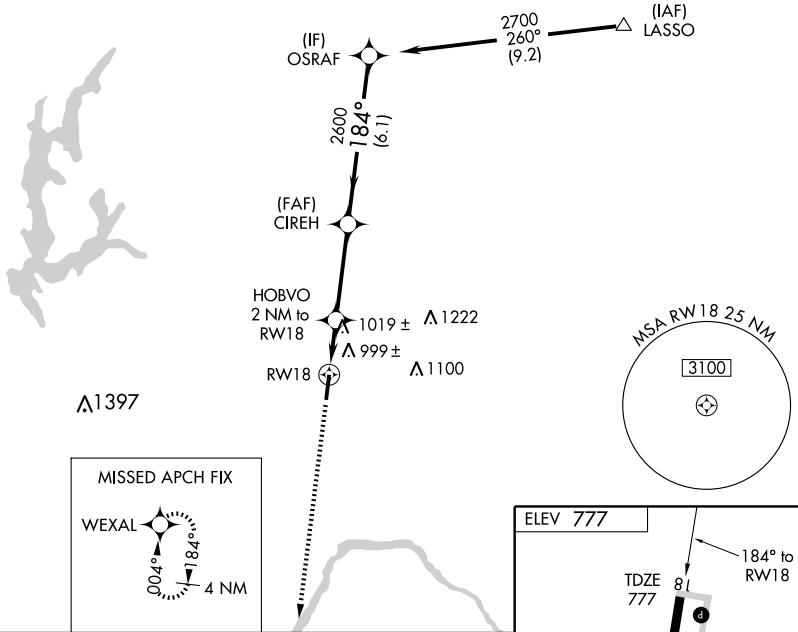
MISSED APPROACH: Climb to 2700 direct WEXAL and hold.

KANSAS CITY APP CON
118.4

CLNC DEL
118.2

UNICOM
122.7 (CTAF)

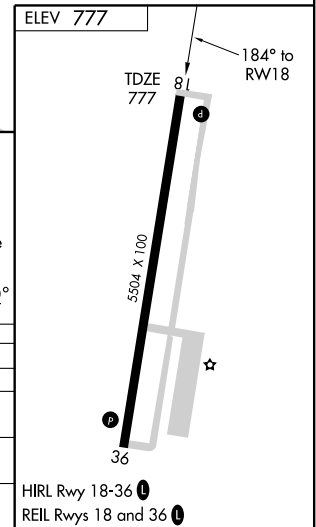
Procedure NA for arrivals at LASSO via V159 southeast bound, and via V502 northeast bound.



NC-3, 22 OCT 2009 to 19 NOV 2009

NC-3, 22 OCT 2009 to 19 NOV 2009

2700	WEXAL	VGSI and RNAV glidepath not coincident.		OSRAF
		HOBVO 2 NM to RWY18	CIREH	2700
*LNAV only	*1.2 NM to RWY18	184°		Procedure Turn NA
RWY18	RWY18	2600		GS 3.00°
1.2 NM	0.8 NM	3.5 NM	6.1 NM	TCH 51
1460*				
CATEGORY	A	B	C	D
LPV DA	1189-1½		412 (500-1½)	NA
LNAV/VNAV DA	1324-2		547 (600-2)	NA
LNAV MDA	1280-1	503 (600-1)	1280-1½	503 (600-1½)
CIRCLING	1300-1	523 (600-1)	1320-1½	543 (600-1½)



RNAV (GPS) RWY 18