

MOSBY, MISSOURI

AL-9229 (FAA)

# ILS or LOC/DME RWY 18

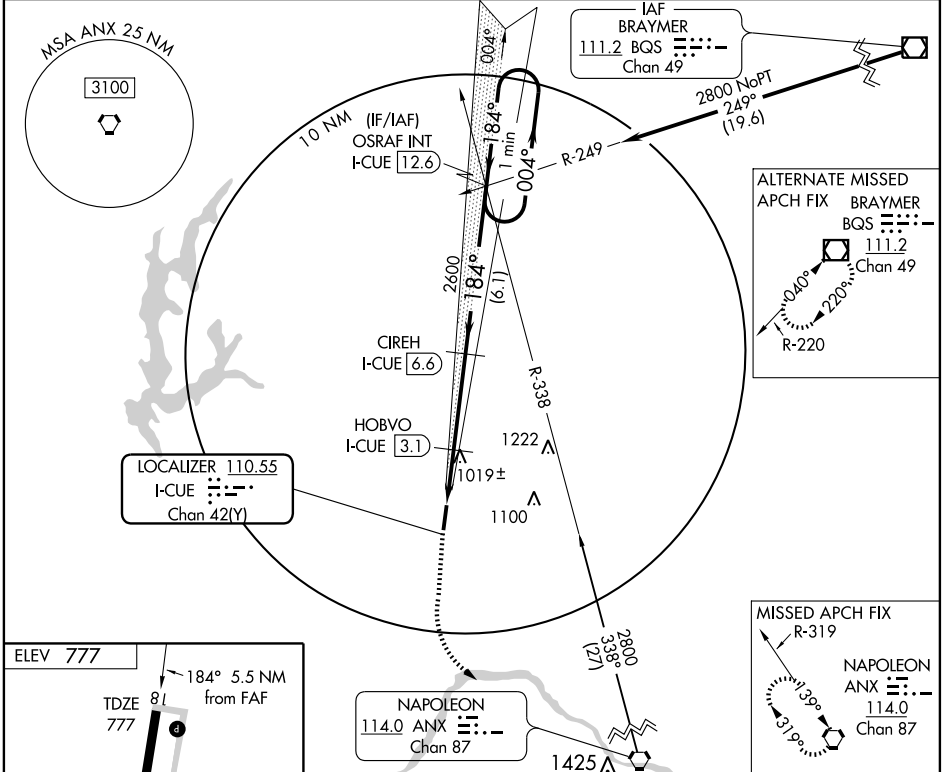
MOSBY/MIDWEST NATIONAL AIR CENTER (GPH)

LOC/DME I-CUE <b>110.55</b> Chan 42 (Y)	APP CRS <b>184°</b>	Rwy Idg TDZE Apt Elev	<b>5504</b> <b>777</b> <b>777</b>
---	------------------------	-----------------------------	---

**NA** Obtain local altimeter setting on CTAF; when not received use Kansas City Intl altimeter setting and increase DA 79 feet and all visibilities ¼ mile; increase all MDAs 80 feet, and circling visibility Cat C ¼ mile.

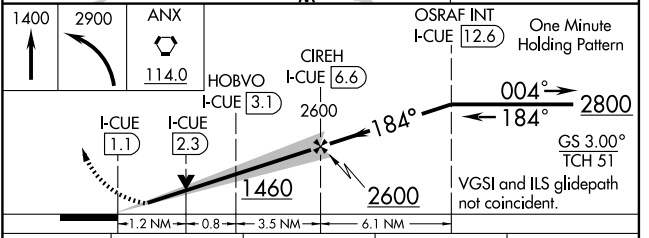
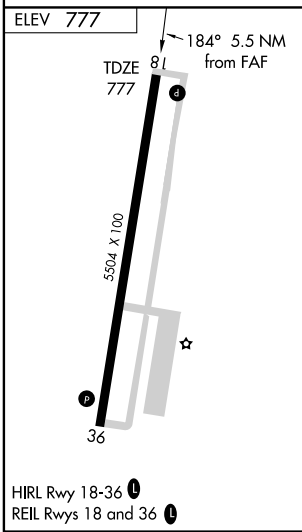
MISSED APPROACH: Climb to 1400 then climbing left turn to 2900 direct ANX VORTAC and hold.

KANSAS CITY APP CON <b>118.4</b>	CLNC DEL <b>118.2</b>	UNICOM <b>122.7 (CTAF)</b>
-------------------------------------	--------------------------	-------------------------------



NC-3, 22 OCT 2009 to 19 NOV 2009

NC-3, 22 OCT 2009 to 19 NOV 2009



CATEGORY	A	B	C	D
S-ILS 18	977- <sup>3</sup> / <sub>4</sub> 200 (200- <sup>3</sup> / <sub>4</sub> )			NA
S-LOC 18	1280-1	503 (600-1)	1280-1 <sup>1</sup> / <sub>2</sub> 503 (600-1 <sup>1</sup> / <sub>2</sub> )	NA
CIRCLING	1300-1	523 (600-1)	1320-1 <sup>1</sup> / <sub>2</sub> 543 (600-1 <sup>1</sup> / <sub>2</sub> )	NA

MOSBY, MISSOURI  
Orig-A 09071

MOSBY/MIDWEST NATIONAL AIR CENTER (GPH)  
39°20'N-94°19'W **ILS or LOC/DME RWY 18**