

OXFORD, MAINE

AL-9228 (FAA)

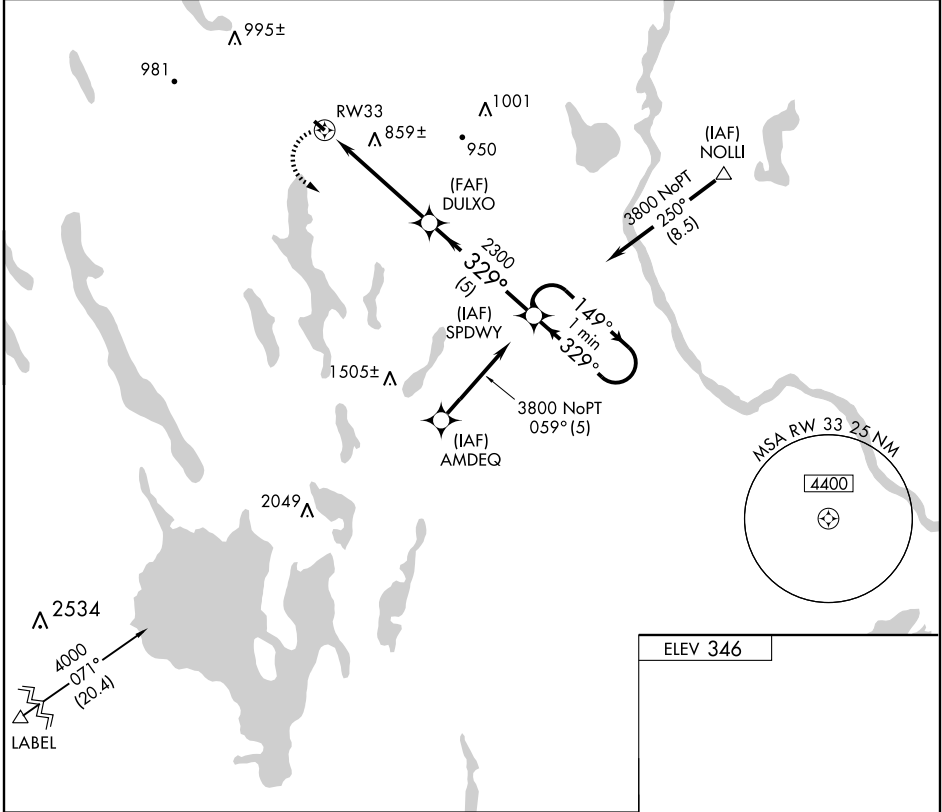
APP CRS 329°	Rwy Idg TDZE Apt Elev	2997 346 346
------------------------	-----------------------------	---

GPS RWY 33

OXFORD COUNTY RGNL (81B)

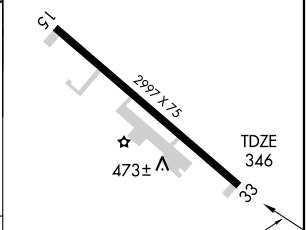
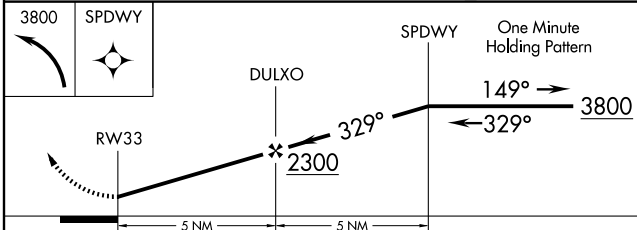
NA Use Auburn-Lewiston altimeter setting.	MISSED APPROACH: Climbing left turn to 3800 direct SPDWY WP and hold.
---	---

PORTLAND APP CON ★ 125.5 353.9	UNICOM 122.8 (CTAF)
--	-------------------------------



NE-1, 22 OCT 2009 to 19 NOV 2009

NE-1, 22 OCT 2009 to 19 NOV 2009



CATEGORY	A	B	C	D
S-33	1120-1 774 (800-1)	1120-1¼ 774 (800-1¼)		NA
CIRCLING	1180-1 834 (900-1)	1180-1¼ 834 (900-1¼)		NA

MIRL Rwy 15-33

OXFORD, MAINE
Orig 07242

44°09'N - 70°29'W

OXFORD COUNTY RGNL (81B)

GPS RWY 33