

DAWSON, GEORGIA

AL-9227 (FAA)

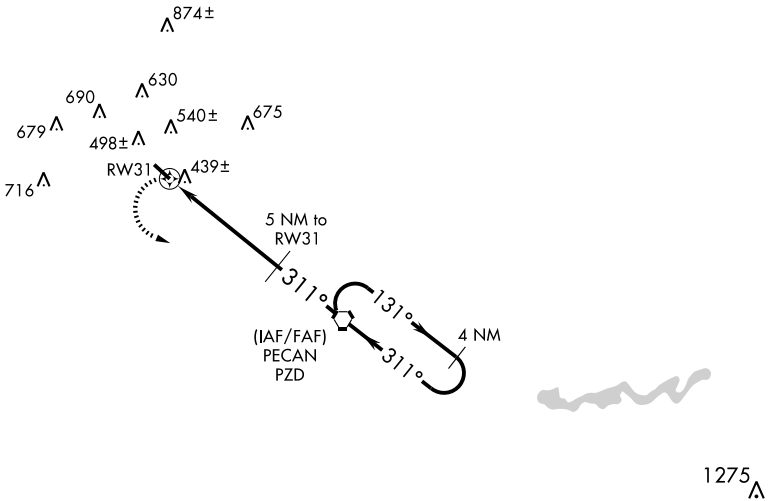
# GPS RWY 31

DAWSON MUNI (16J)

APP CRS	Rwy Idg	<b>4510</b>
<b>311°</b>	TDZE	<b>321</b>
	Apt Elev	<b>333</b>

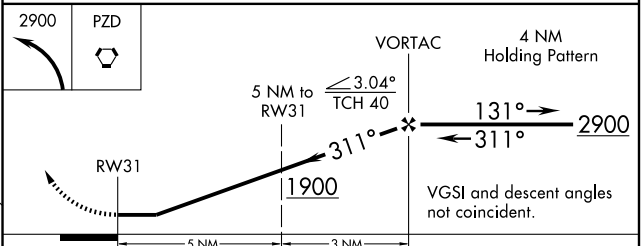
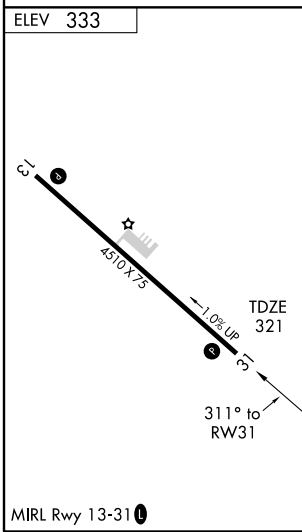
<p><b>▽</b> Use Albany altimeter setting.</p> <p><b>△NA</b></p>	<p>MISSED APPROACH: Climbing left turn to 2900 direct PZD VORTAC and hold.</p>
---	--

<p>JACKSONVILLE CENTER</p> <p><b>125.75 226.8</b></p>	<p>UNICOM</p> <p><b>122.8 (CTAF) 0</b></p>
---	--



SE-4, 22 OCT 2009 to 19 NOV 2009

SE-4, 22 OCT 2009 to 19 NOV 2009



CATEGORY	A	B	C	D
S-31	760-1	439 (500-1)	NA	
CIRCLING	920-1	587 (600-1)	NA	

DAWSON, GEORGIA  
Orig-A 09239

31° 45'N-84° 25'W

DAWSON MUNI (16J)  
**GPS RWY 31**