

RNAV (GPS) RWY 11

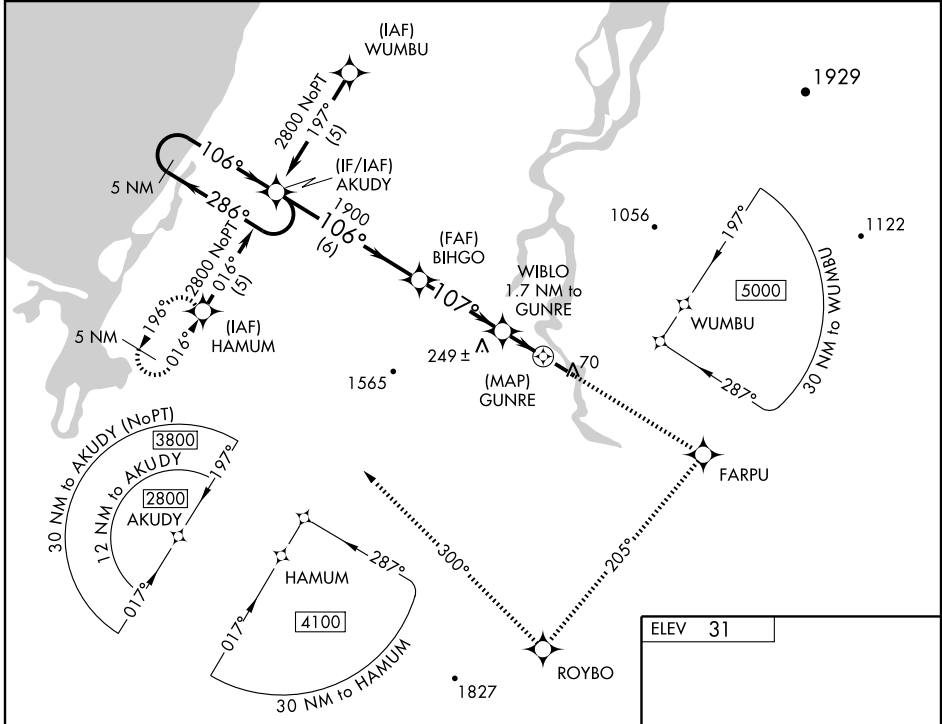
BUCKLAND (BVK)(PABL)

APP CRS	Rwy Idg	3200
107°	TDZE	31
	Apt Elev	31

⚠ If local altimeter setting not received, use Selawik altimeter setting and increase all MDAs 120 feet.
⚠ DME/DME RNP-0.3 NA.
 VDP NA when using Selawik altimeter setting.

MISSED APPROACH: Climb to 2800 direct FARPU and right turn via 205° track to ROYBO and right turn via 300° track to HAMUM and hold.

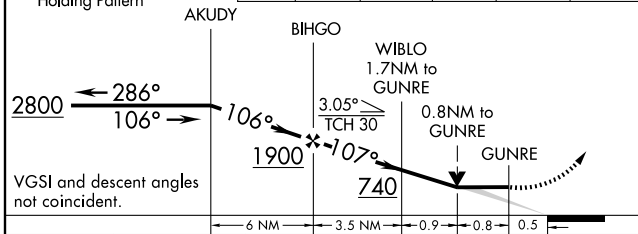
AWOS-3 135.15	ANCHORAGE CENTER 119.2 263.0	KOTZEBUE RADIO 122.3	CTAF 122.9 ⓪
-------------------------	--	--------------------------------	-------------------------------



AK, 22 OCT 2009 to 17 DEC 2009

AK, 22 OCT 2009 to 17 DEC 2009

5 NM Holding Pattern	2800	FARPU	ROYBO	HAMUM
	↑	✧	TRK 205°	TRK 300°



CATEGORY	A	B	C	D
RNAV MDA	480-1	449 (500-1)		NA
CIRCLING	580-1 549 (600-1)	600-1 569 (600-1)		NA

ELEV 31
TDZE 31
MIRL Rwy 11-29 ⓪