

WEEDSPORT, NEW YORK

AL-9225 (FAA)

RNAV (GPS) RWY 10

WEEDSPORT/ WHITFORDS (B16)

APP CRS	Rwy ldg	3200
099°	TDZE	400
	Apt Elev	400

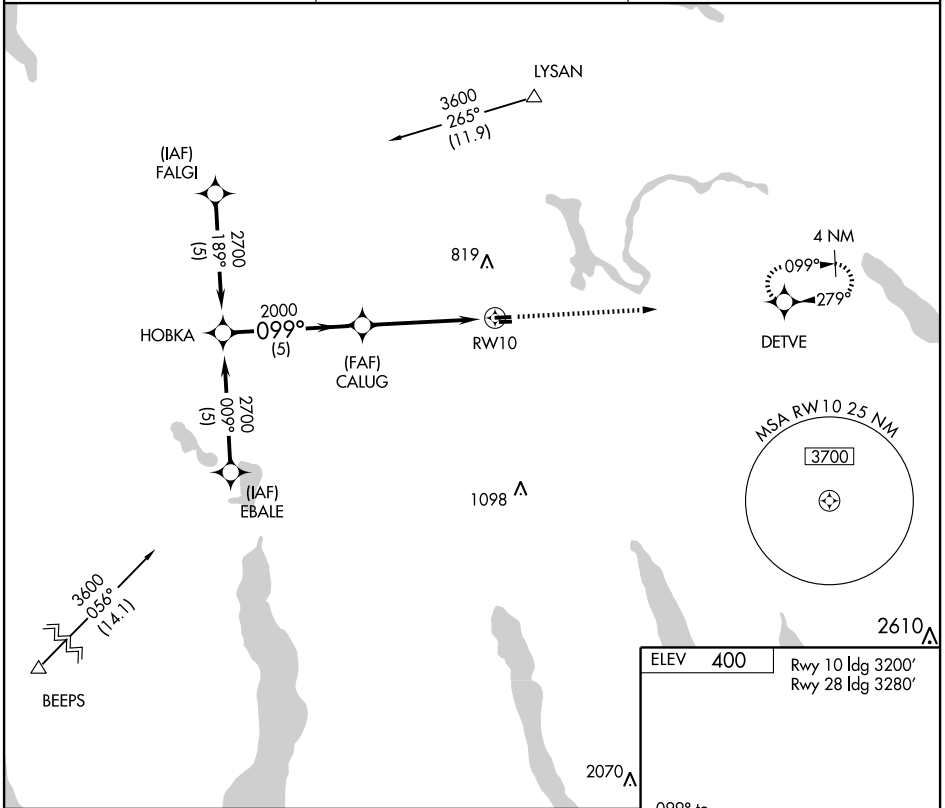
Use Syracuse altimeter setting.
GPS or RNP-0.3 required.
DME/DME RNP-0.3 NA.

MISSED APPROACH: Climb to 3000 direct DETVE WP and hold.

SYRACUSE APP CON
134.275 279.6

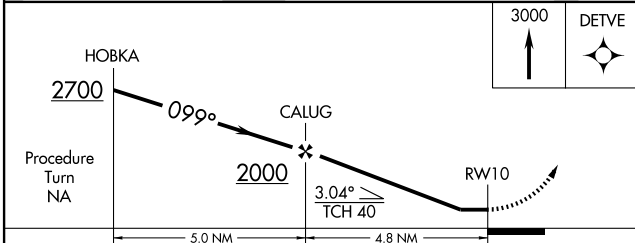
UNICOM
122.8 (CTAF)

122.70



NE-2, 22 OCT 2009 to 19 NOV 2009

NE-2, 22 OCT 2009 to 19 NOV 2009



ELEV	400	Rwy 10 ldg 3200'
		Rwy 28 ldg 3280'

The runway diagram shows RWY 10 (3630 X 60) and RWY 28 (2800 X 100). The TDZE is 400 ft. A MIRL RWY 10-28 is also indicated.

CATEGORY	A	B	C	D
LNVA MDA	1020-1	620 (700-1)		NA
CIRCLING	1020-1 620 (700-1)	1060-1 660 (700-1)		NA

WEEDSPORT, NEW YORK
Orig 07298

43°05'N - 76°32'W

WEEDSPORT/ WHITFORDS (B16)

RNAV (GPS) RWY 10