

PINECREEK, MINNESOTA

AL-9222 (FAA)

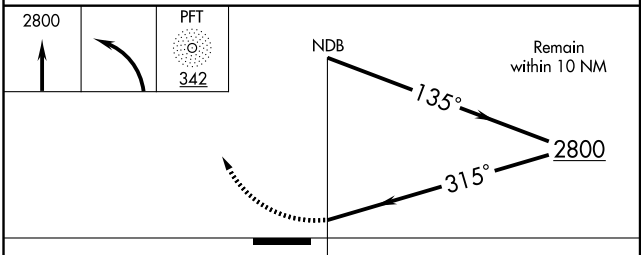
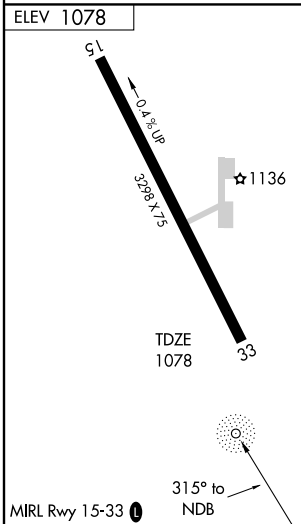
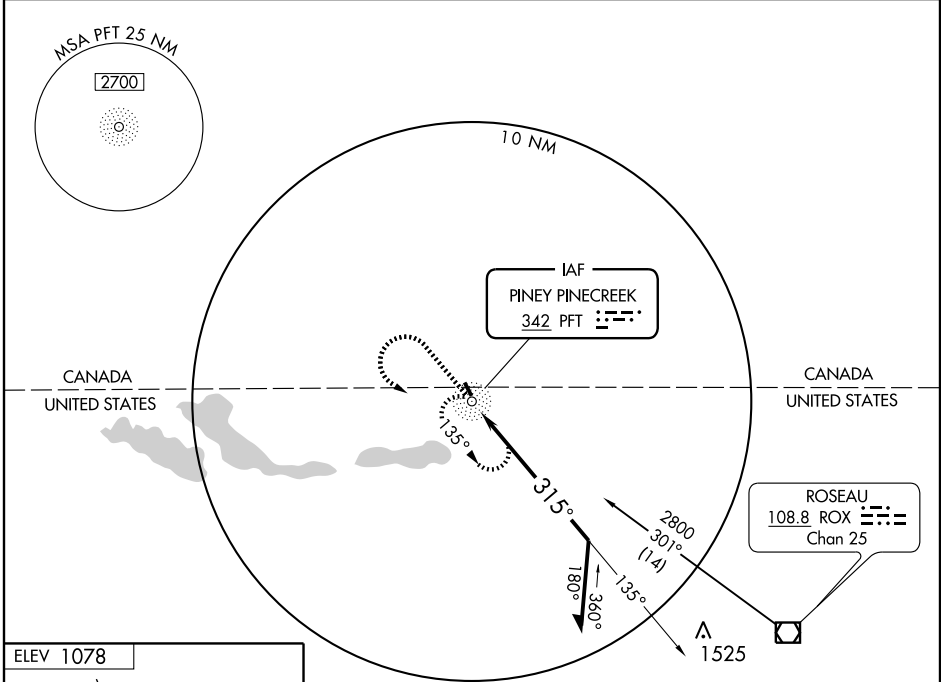
NDB or GPS RWY 33

PINECREEK/ PINEY PINECREEK BORDER (48°Y)

NDB PFT 342	APP CRS 315°	Rwy Idg TDZE Apt Elev	3298 1078 1078
-----------------------	------------------------	-----------------------------	---

▲ NA Use Roseau, MN altimeter setting.	MISSED APPROACH: Climb to 2800 then left turn direct PFT NDB and hold.
---	--

MINNEAPOLIS CENTER 134.75 251.1	UNICOM 122.8 (CTAF) 0
---	---------------------------------



CATEGORY	A	B	C	D
S-33	1 600-1	522 (600-1)		NA
CIRCLING	1 600-1	522 (600-1)		NA

PINECREEK, MINNESOTA
Orig 09015

49°00'N-95°59'W

PINECREEK/ PINEY PINECREEK BORDER (48°Y)

NDB or GPS RWY 33

NC-1, 22 OCT 2009 to 19 NOV 2009

NC-1, 22 OCT 2009 to 19 NOV 2009