

RNAV (GPS) RWY 25

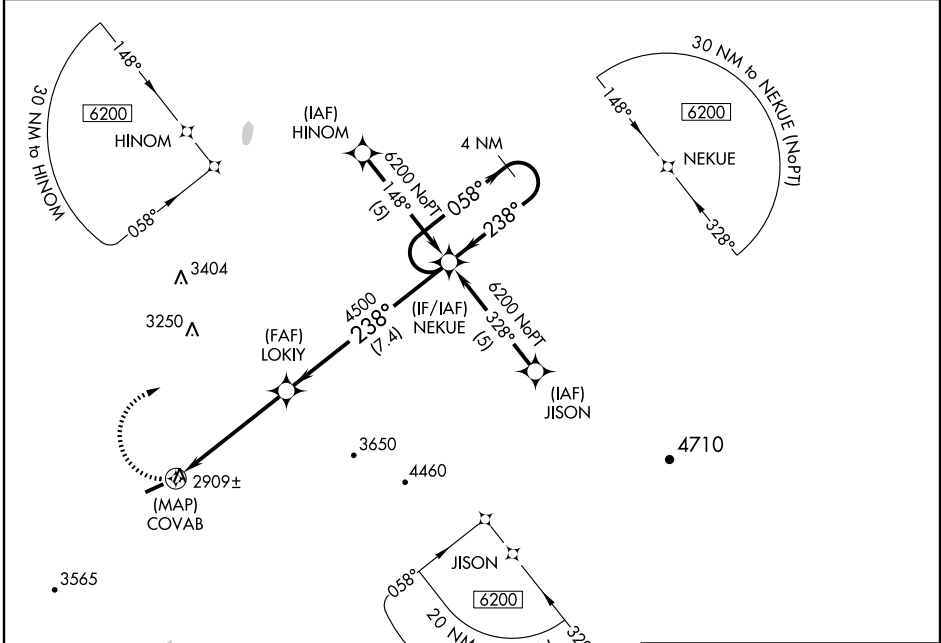
RICHLANDS / TAZEWELL COUNTY (JFZ)

APP CRS 238°	Rwy Idg 4300
	TDZE 2653
	Apt Elev 2653

▼ DME/DME RNP-0.3 NA. Procedure NA at night.
▲ If local altimeter setting not received, use Lonesome Pine altimeter setting and increase all MDAs 100 ft.

MISSED APPROACH: Climbing right turn to 6200 direct NEKUE and hold, continue climb-in-hold to 6200.

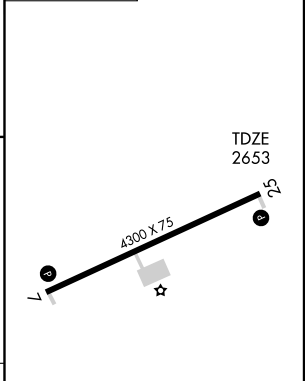
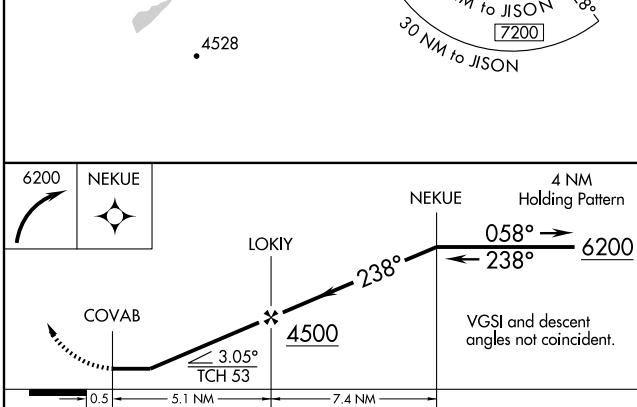
AWOS-3 118.075	INDIANAPOLIS CENTER 126.575 257.85	GCO 135.075	UNICOM 123.05 (CTAF) ①
--------------------------	--	-----------------------	----------------------------------



NE-3, 22 OCT 2009 to 19 NOV 2009

NE-3, 22 OCT 2009 to 19 NOV 2009

ELEV 2653



6200 NEKUE				
LOKIY				
COVAB				
5.1 NM	7.4 NM			
0.5				
CATEGORY	A	B	C	D
LNAV MDA	3160-1	507 (600-1)	3160-1½	507 (600-1½)
CIRCLING	3220-1	567 (600-1)	3220-1½	3220-2
			567 (600-1½)	567 (600-2)

MIRL Rwy 7-25 ①
 REIL Rwy 7 and 25 ①