

GUERNSEY, WYOMING

AL-9220 (FAA)

# NDB RWY 32

GUERNSEY/CAMP GUERNSEY (7V6)

NDB GYZ <b>280</b>	APP CRS <b>321°</b>	Rwy Idg <b>5510</b>
		TDZE <b>4374</b>
		Apt Elev <b>4400</b>

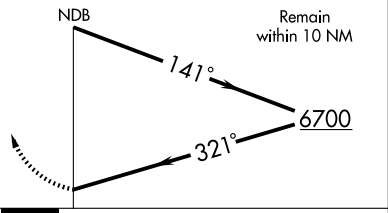
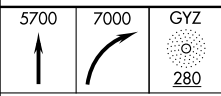
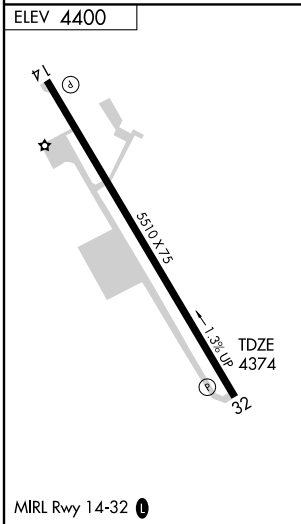
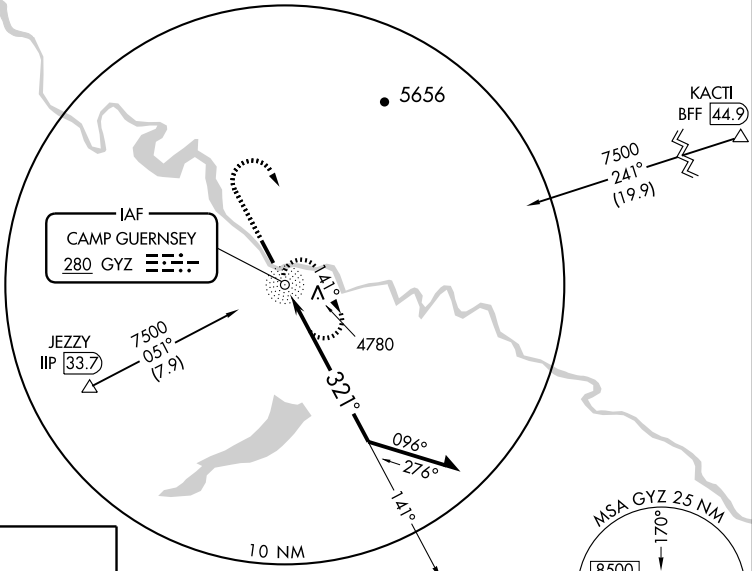
**NA** When control tower closed obtain local altimeter setting on UNICOM, when not received use Scottsbluff, NE altimeter setting and increase all MDAs 200 feet and increase CATs B and C visibilities 1/4 mile.

**MISSED APPROACH:** Climb to 5700 then climbing right turn to 7000 direct GYZ NDB and hold.

DENVER CENTER <b>135.6 363.025</b>	UNICOM <b>122.7 (CTAF)</b>
---------------------------------------	-------------------------------

NW-1, 22 OCT 2009 to 19 NOV 2009

NW-1, 22 OCT 2009 to 19 NOV 2009



CATEGORY	A	B	C	D
S-32	5280-1¼	906 (900-1¼)	5280-2¾ 906 (900-2¾)	5280-3 906 (900-3)
CIRCLING	5340-1¼ 940 (1000-1¼)	5340-1½ 940 (1000-1½)	5420-3	1020 (1100-3)

GUERNSEY, WYOMING  
Orig-A 09239

42°16'N-104°44'W

GUERNSEY/CAMP GUERNSEY (7V6)  
**NDB RWY 32**