

STUART, FLORIDA

AL-9217 (FAA)

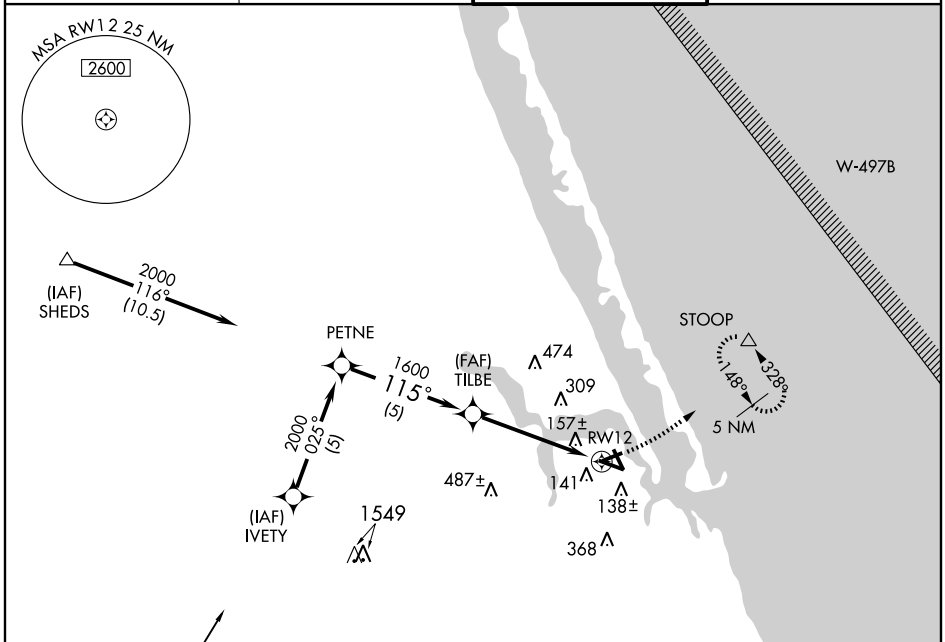
GPS RWY 12

STUART/ WITHAM FIELD (SUA)

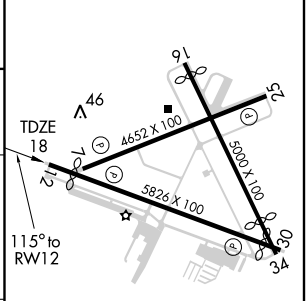
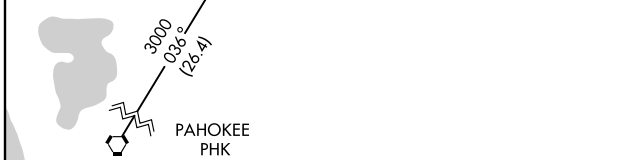
APP CRS	Rwy ldg	5178
115°	TDZE	18
	Apt Elev	18

<p>▽ △ NA</p>		<p>MISSED APPROACH: Climbing left turn to 3000 direct STOOB WP and hold.</p>	
---------------------------------	--	--	--

<p>ATIS 134.475</p>	<p>PALM BEACH APP CON 128.3 387.1</p>	<p>STUART TOWER ★ 126.6 (CTAF) 0</p>	<p>GND CON 121.7</p>
--------------------------------	--	---	---------------------------------



ELEV 18	Rwy 12 ldg 5178'
	Rwy 16 ldg 4664'
	Rwy 30 ldg 5366'
	Rwy 34 ldg 4121'



CATEGORY	A	B	C	D
S-12	440-1	422 (500-1)	440-1¼	422 (500-1¼)
CIRCLING	460-1 442 (500-1)	480-1 462 (500-1)	480-1½ 462 (500-1½)	580-2 562 (600-2)

REIL Rws 12 and 30 0
MIRL Rws 12-30 and 7-25 0

SE-3, 22 OCT 2009 to 19 NOV 2009

SE-3, 22 OCT 2009 to 19 NOV 2009

STUART, FLORIDA
Orig 08157

27° 11' N - 80° 13' W

STUART/ WITHAM FIELD (SUA)

GPS RWY 12