

PALO ALTO, CALIFORNIA

AL-9216 (FAA)

VOR/DME RWY 31

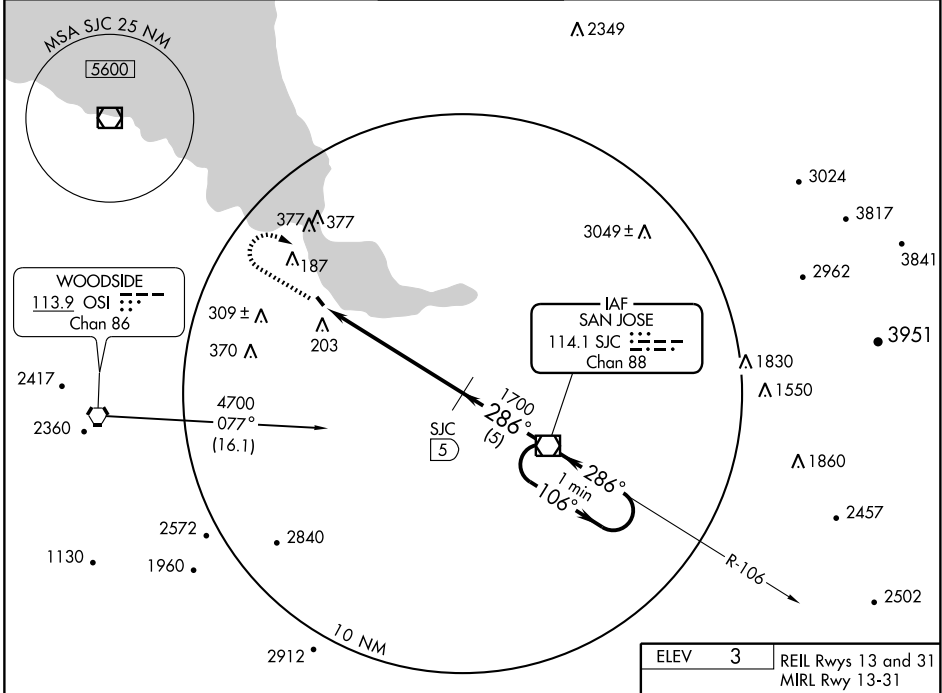
PALO ALTO ARPT OF SANTA CLARA COUNTY (P.A.O)

VOR/DME SJC 114.1 Chan 88	APP CRS 286°	Rwy Idg 2443 TDZE 3 Apt Elev 3
---	------------------------	---

⚠ When control tower closed, use Norman Y. Mineta San Jose Intl altimeter setting.
⚠ Circling not authorized SW of Rwy 13-31.

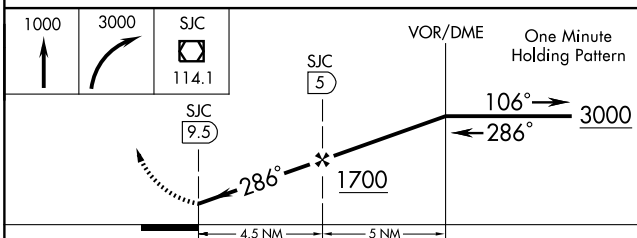
MISSED APPROACH: Climb to 1000 then climbing right turn to 3000 direct SJC VOR/DME and hold.

ATIS 135.275	NORCAL APP CON 121.3 270.35	PALO ALTO TOWER* 118.6 (CTAF)	GND CON 125.0	UNICOM 122.95
------------------------	---------------------------------------	--	-------------------------	-------------------------

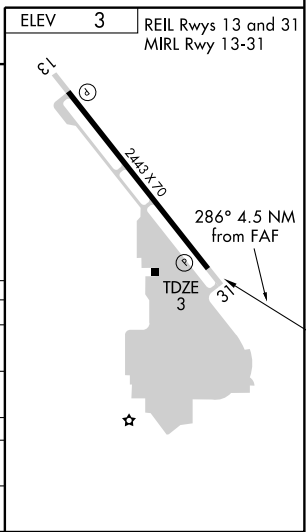


SW-2, 22 OCT 2009 to 19 NOV 2009

SW-2, 22 OCT 2009 to 19 NOV 2009



CATEGORY	A	B	C	D
S-31	460-1	457 (500-1)		NA
CIRCLING	460-1 457 (500-1)	540-1 537 (600-1)		NA
NORMAN Y. MINETA SAN JOSE INTL ALTIMETER SETTING MINIMUMS				
S-31	500-1	497 (500-1)		NA
CIRCLING	500-1 497 (500-1)	580-1 577 (600-1)		NA



PALO ALTO, CALIFORNIA
Orig-B 09183

PALO ALTO ARPT OF SANTA CLARA COUNTY (P.A.O)
37°28'N-122°07'W

VOR/DME RWY 31