

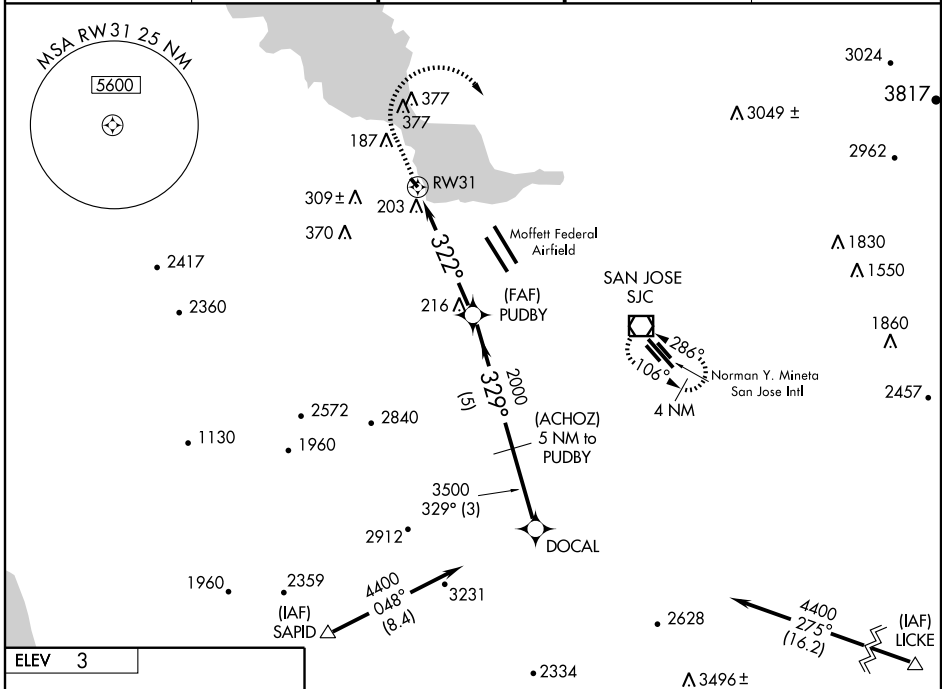
GPS RWY 31

PALO ALTO ARPT OF SANTA CLARA COUNTY (P.A.O)

APP CRS	Rwy Idg	2443
322°	TDZE	3
	Apt Elev	3

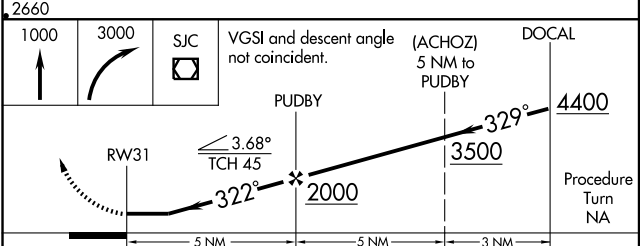
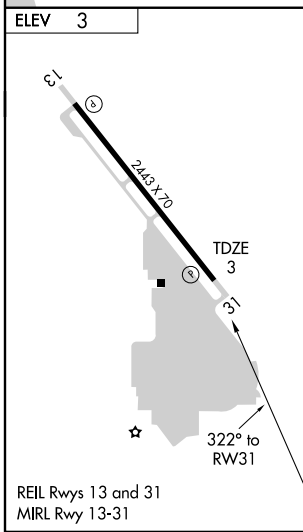
<p>▼ When control tower closed, use Norman Y. Mineta San Jose Intl altimeter setting. ▲ NA Circling not authorized southwest of Rwy 13-31.</p>	<p>MISSED APPROACH: Climb to 1000 then climbing right turn to 3000 direct SJC VOR/DME and hold.</p>
---	---

<p>ATIS 135.275</p>	<p>NORCAL APP CON 121.3 270.35</p>	<p>PALO ALTO TOWER* 118.6 (CTAF)</p>	<p>GND CON 125.0</p>	<p>UNICOM 122.95</p>
--------------------------------	---	--	---------------------------------	---------------------------------



SW-2, 22 OCT 2009 to 19 NOV 2009

SW-2, 22 OCT 2009 to 19 NOV 2009



CATEGORY	A	B	C	D
S-31	460-1	457 (500-1)		NA
CIRCLING	460-1 457 (500-1)	500-1 497 (500-1)		NA
NORMAN Y. MINETA SAN JOSE INTL ALTIMETER SETTING MINIMUMS				
S-31	500-1	497 (500-1)		NA
CIRCLING	500-1 497 (500-1)	520-1 517 (600-1)		NA

GPS RWY 31