

RNAV (GPS) RWY 36

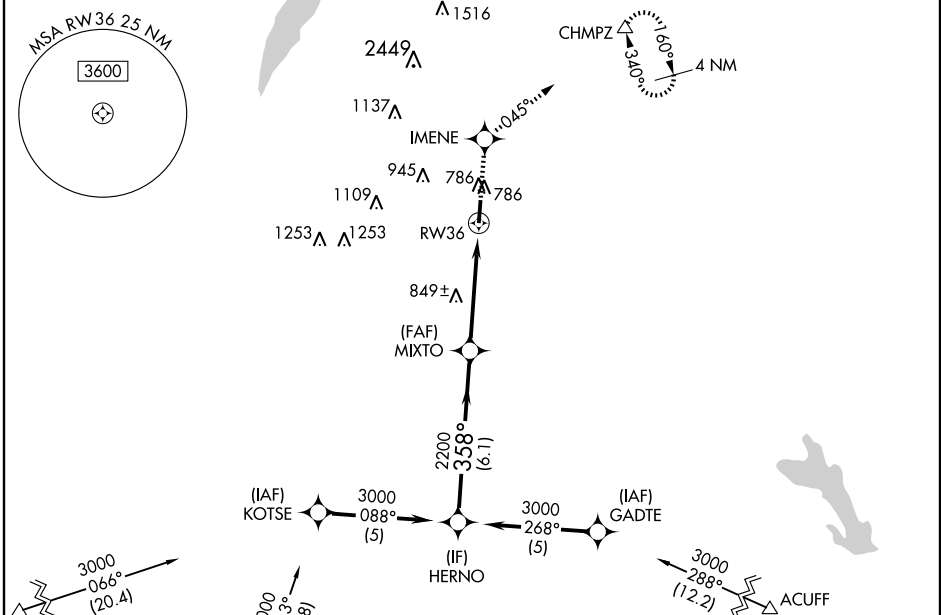
MIDLOTHIAN/WAXAHACHIE/MID-WAY RGNL (JWY)

WAAS CH 62814 W36A	APP CRS 358°	Rwy Idg TDZE Apt Elev	4999 703 726
--	------------------------	-----------------------------	---

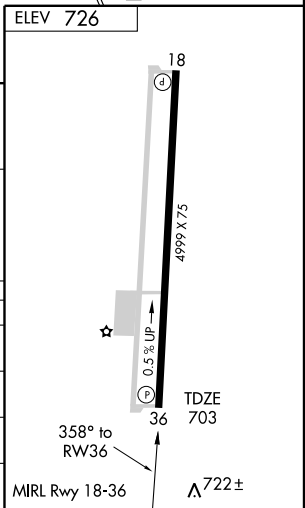
⚠ For uncompensated Baro-VNAV systems, LNAV/VNAV NA below -16°C (4°F) or above 47°C (117°F). DME/DME RNP-0.3 NA. When local altimeter setting not received, use Dallas Love Field altimeter setting and increase all DA 88 feet and all MDA 100 feet, increase LPV all Cats visibility ¼ mile, LNAV/VNAV all Cats visibility ½ mile, LNAV Cats C and D visibility ¼ mile, Circling Cat D visibility ¼ mile. Baro-VNAV and VDP NA when using Dallas Love Field altimeter setting.

MISSED APPROACH: Climb to 3000 direct IMENE and right turn via track 045° to CHMPZ and hold, continue climb-in-hold to 3000.

AWOS-3 119.575	REGIONAL APP CON 125.2 343.65	UNICOM 122.975 (CTAF)
--------------------------	---	---------------------------------



HERNO	VGSI and RNAV glidepath not coincident.			3000	IMENE	CHMPZ
	3000	MIXTO	RW36	TRK 045°	△	
Procedure Turn NA GS 3.00° TCH 40	358°	2200	*1.1 NM to RW36	*LNAV only		
CATEGORY	A	B	C	D		
LPV DA		953-1	250 (300-1)			
LNAV/VNAV DA		992-1	289 (300-1)			
LNAV MDA	1100-1	397 (400-1)		1100-1¼ 397 (400-1¼)		
CIRCLING	1140-1 414 (500-1)	1180-1 454 (500-1)	1180-1½ 454 (500-1½)	1300-2 574 (600-1)		



SC-2, 22 OCT 2009 to 19 NOV 2009

SC-2, 22 OCT 2009 to 19 NOV 2009

RNAV (GPS) RWY 36