

HARTINGTON, NEBRASKA

AL-9211 (FAA)

VOR/DME YKN 111.4 Chan 51	APP CRS 336°	Rwy Idg TDZE Apt Elev	3550 1383 1383
---	------------------------	-----------------------------	---

VOR/DME RWY 31

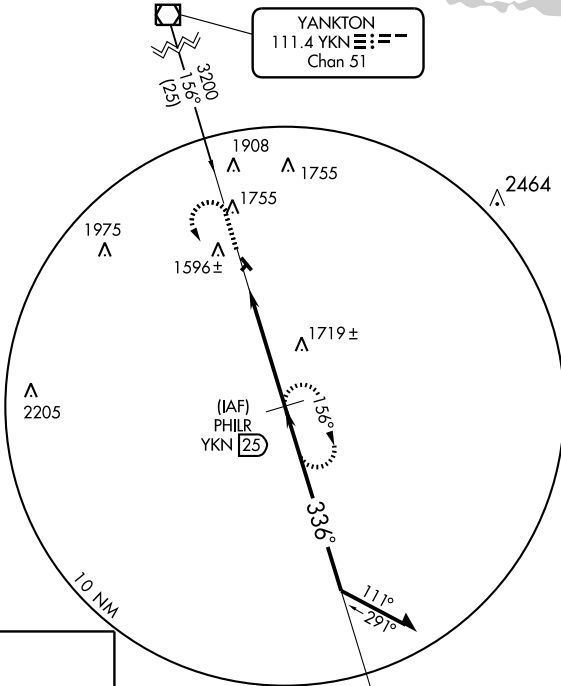
HARTINGTON MUNI (ØB4)

▲ NA Use Yankton altimeter setting.

MISSED APPROACH: Climb to 3200 then left turn via YKN R-156 to PHILR and hold.

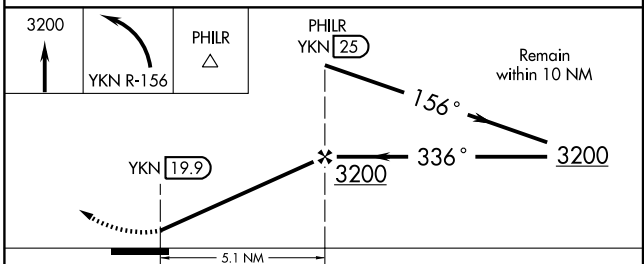
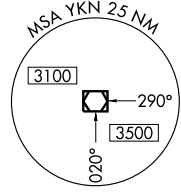
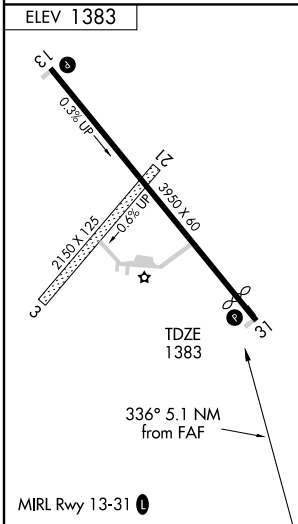
MINNEAPOLIS CENTER **124.1 269.0**

CTAF **122.9**



NC-2, 22 OCT 2009 to 19 NOV 2009

NC-2, 22 OCT 2009 to 19 NOV 2009



CATEGORY	A	B	C	D
S-31	2040-1	657 (700-1)		NA
CIRCLING	2040-1	657 (700-1)		NA

HARTINGTON, NEBRASKA
Orig-A 09183

42°36'N-97°15'W

HARTINGTON MUNI (ØB4) VOR/DME RWY 31