

TEXOMA NINE DEPARTURE

SL-9209 (FAA)

GRAND PRAIRIE, TEXAS

GND CON 121.15
 GRAND PRAIRIE TWR*
 128.55 (CTAF)
 REGIONAL DEP CON
 135.975 379.9

TULSA
 114.4 TUL
 Chan 91
 N36°11.78'-W95°47.29'
 L-15, H-6

OKMULGEE
 114.9 OKM
 Chan 96
 N35°41.59'-W95°51.96'
 L-15, H-6

MC ALESTER
 112.0 MLC
 Chan 57
 N34°50.97'-W95°46.94'
 L-17, H-6

WILL ROGERS
 114.1 IRW
 Chan 88
 N35°21.52'-W97°36.55'
 L-15, H-6

ZEMMA
 N34°23.03'-W96°59.40'
 L-17, H-6

EAKER
 N34°19.05'-W96°37.19'
 L-17, H-6

TIKYS
 N34°04.00'-W96°25.56'

ARDMORE
 116.7 ADM
 Chan 114
 N34°12.69'-W97°10.10'
 L-17, H-6

BLECO
 N33°27.05'-W97°06.54'
 L-17

GRABE
 N33°27.09'-W96°57.69'
 L-17

AKUNA
 N33°27.04'-W96°49.39'

BONHAM
 114.6 BYP
 Chan 93

BOWIE
 112.4 UKW
 Chan 71

LOWGN
 N33°27.05'-W97°14.99'

RANGER
 115.7 FUZ
 Chan 104
 N32°53.37'-W97°10.77'

MAVERICK
 113.1 TTT
 Chan 78
 N32°52.15'-W97°02.43'

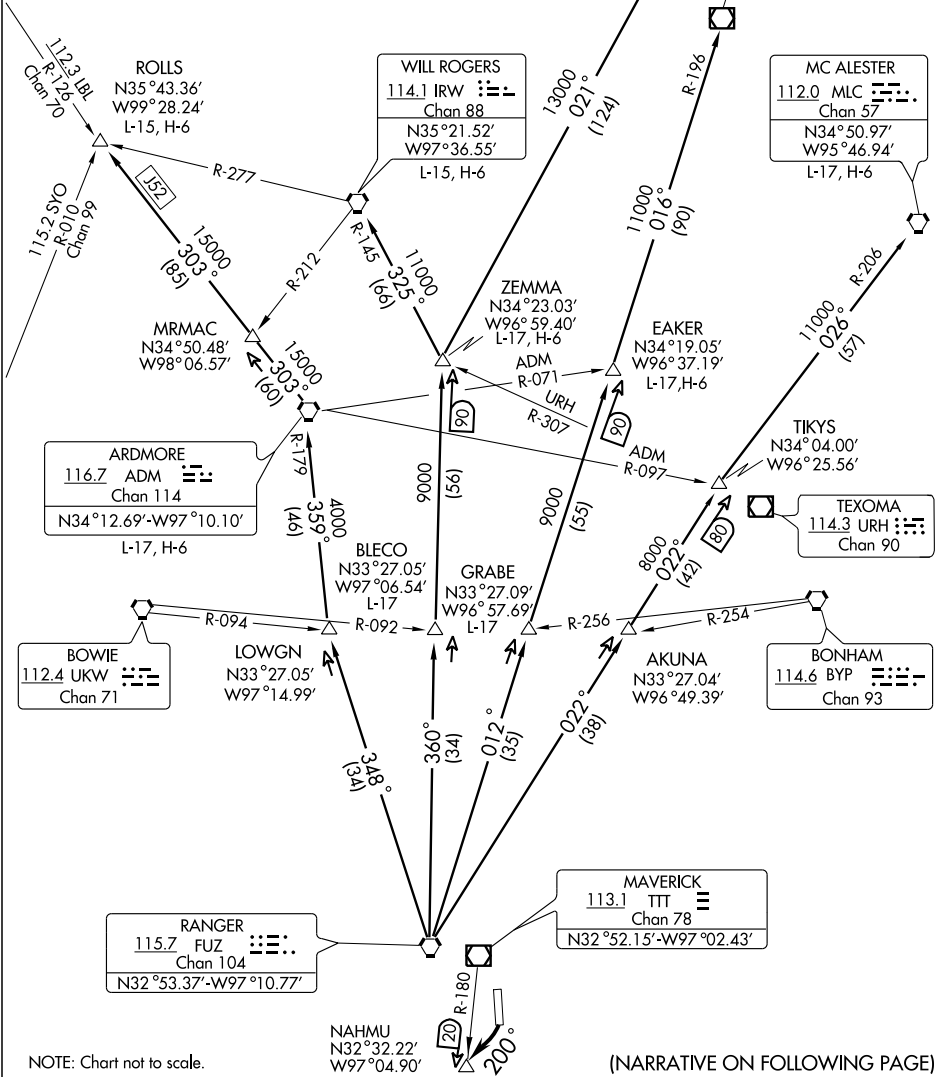
NAHMU
 N32°32.22'-W97°04.90'

NOTE: DME Required.

TAKE-OFF MINIMUMS:

Rwy 17 standard.

Rwy 35 NA (Airspace Actions)



SC-2, 22 OCT 2009 to 19 NOV 2009

SC-2, 22 OCT 2009 to 19 NOV 2009

NOTE: Chart not to scale.

(NARRATIVE ON FOLLOWING PAGE)

TEXOMA NINE DEPARTURE

GRAND PRAIRIE, TEXAS