

# RNAV (GPS) RWY 35

GRAND PRAIRIE MUNI (GPM)

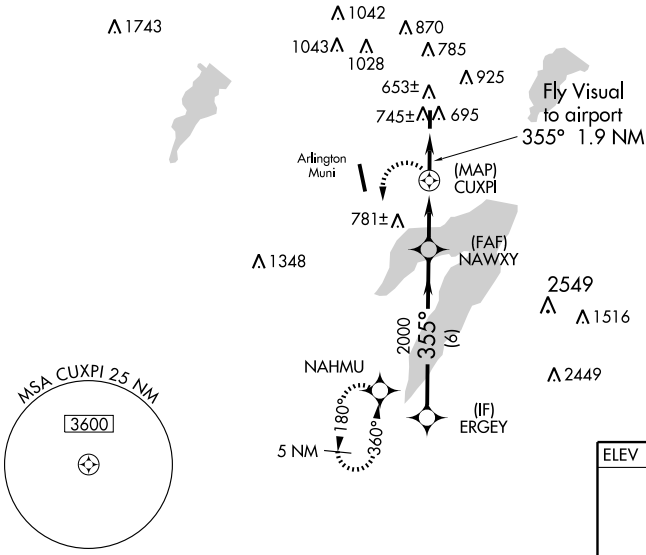
APP CRS <b>355°</b>	Rwy Idg <b>4000</b>
	TDZE <b>589</b>
	Apt Elev <b>589</b>

**▽** DME/DME RNP-0.3 NA. If local altimeter setting not received,  
**▲** use Arlington Muni altimeter setting.

**MISSED APPROACH:** Climbing left turn to 2300  
 direct NAHMU and hold.

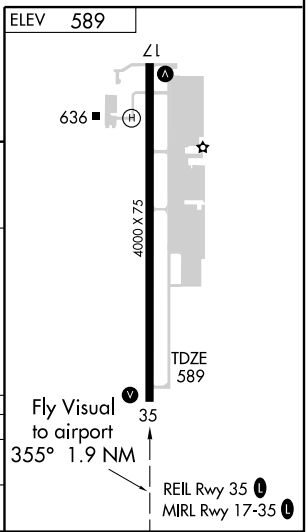
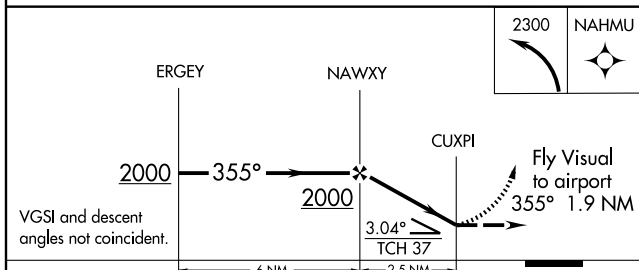
AWOS-3 <b>118.475</b>	REGIONAL APP CON <b>135.975 379.9</b>	GRAND PRAIRIE TOWER * <b>128.55 (CTAF) 0</b>	GND CON <b>121.15</b>	UNICOM <b>122.8</b>
--------------------------	--	---	--------------------------	------------------------

## RADAR REQUIRED



SC-2, 22 OCT 2009 to 19 NOV 2009

SC-2, 22 OCT 2009 to 19 NOV 2009



CATEGORY	A	B	C	D
LNVA MDA	1000-2¼	411 (500-2¼)	NA	
CIRCLING	NA			