

SELAWIK, ALASKA

AL-9207 (FAA)

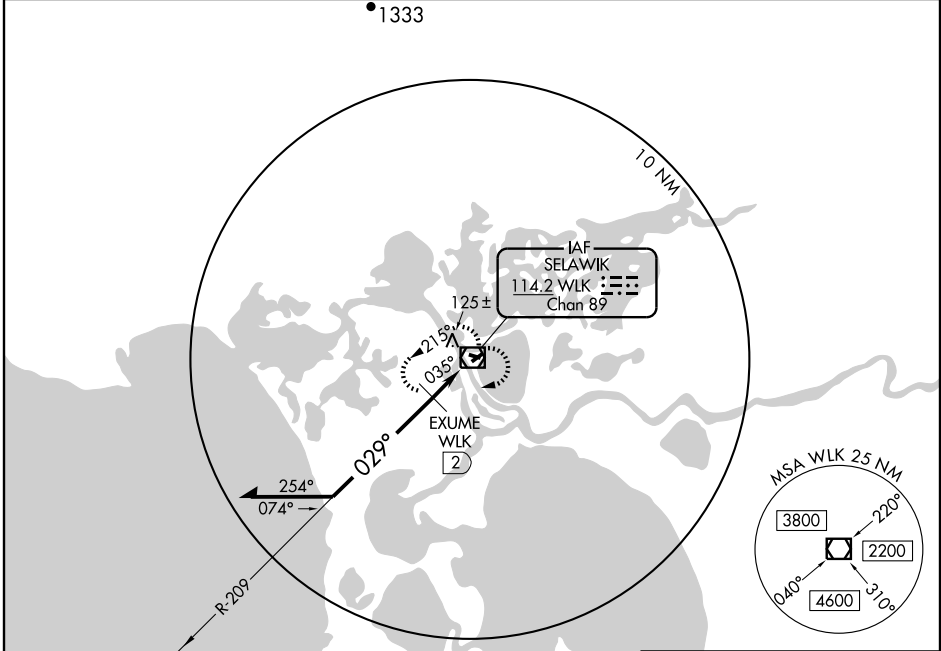
VOR RWY 4
SELAWIK (WLK) (PASK)

VOR/DME WLK 114.2 Chan 89	APP CRS 029°	Rwy Idg 3002 TDZE 17 Apt Elev 17
---	------------------------	---

▼ Visibility reduction by helicopters NA. If local altimeter setting not received, use Kotzebue altimeter setting and increase all MDAs 160 feet. VDP NA when using Kotzebue altimeter setting.

MISSED APPROACH: Climb to 1000 then climbing right turn to 2500 direct in WLK VOR/DME and hold, continue climb-in-hold to 2500.

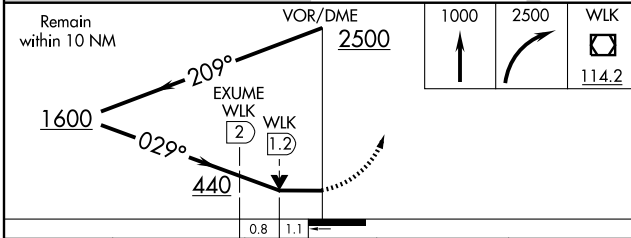
AWOS-3 135.65	ANCHORAGE CENTER 119.2 263.0	KOTZEBUE RADIO 122.50	CTAF 122.7 0*	122.5 0*
-------------------------	--	---------------------------------	-------------------------	-----------------



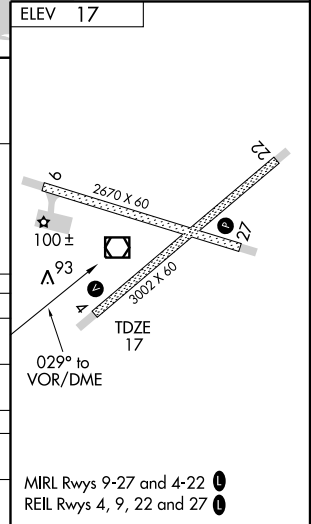
AK, 22 OCT 2009 to 17 DEC 2009

AK, 22 OCT 2009 to 17 DEC 2009

ELEV 17



CATEGORY	A	B	C	D
S-4	440-1	423 (500-1)	440-1½	423 (500-1½)
CIRCLING	440-1 423 (500-1)	480-1 463 (500-1)	480-1½ 463 (500-1½)	580-2 563 (600-2)
EXUME FIX MINIMUMS				
S-4	380-1 363 (400-1)			380-1½ 363 (400-1½)
CIRCLING	440-1 423 (500-1)	480-1 463 (500-1)	480-1½ 463 (500-1½)	580-2 563 (600-2)



MIRL Rwy 9-27 and 4-22 0
REIL Rwy 4, 9, 22 and 27 0

SELAWIK, ALASKA
Amdt 1 09071

66° 36' N-160° 00' W

SELAWIK (WLK) (PASK)
VOR RWY 4