

SELAWIK, ALASKA

AL-9207 (FAA)

VOR/DME WLK <b>114.2</b> Chan <b>89</b>	APP CRS <b>223°</b>	Rwy Idg <b>3002</b> TDZE <b>17</b> Apt Elev <b>17</b>
---	------------------------	---

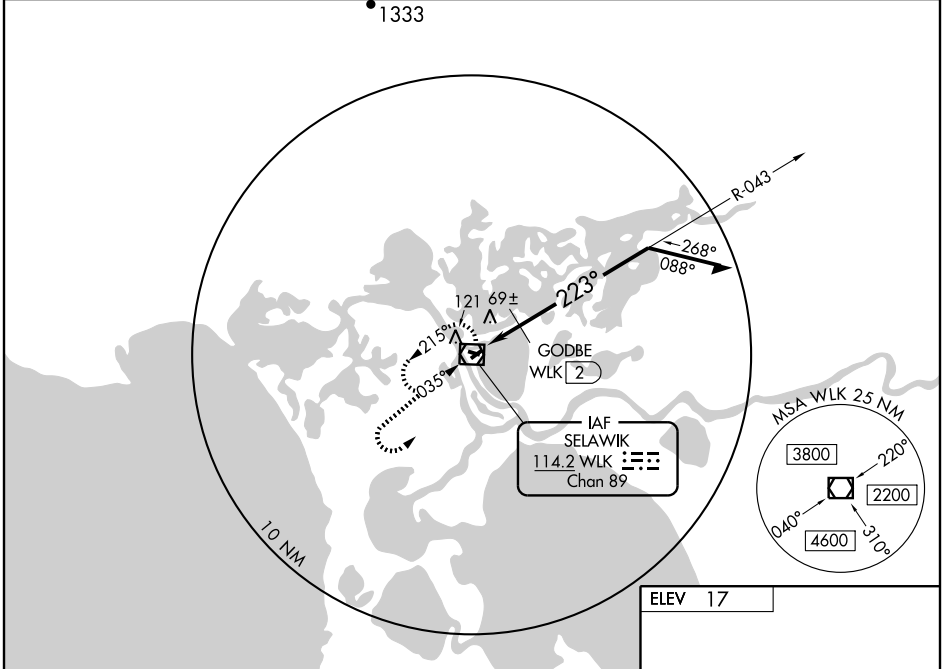
# VOR RWY 22

SELAWIK (WLK) (PASK)

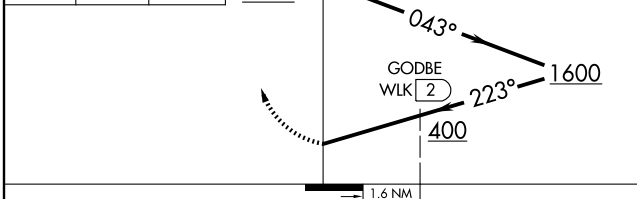
**▼** Visibility reduction by helicopters NA. If local altimeter setting not received, use Kotzebue altimeter setting and increase all MDAs 160 feet.

**▲** MISSED APPROACH: Climb to 1000 then climbing left turn to 2500 direct WLK VOR/DME and hold, continue climb-in-hold to 2500.

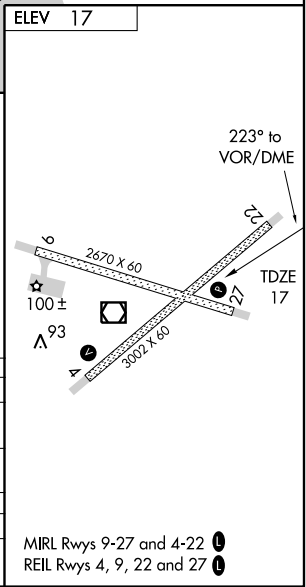
AWOS-3 <b>135.65</b>	ANCHORAGE CENTER <b>119.2 263.0</b>	KOTZEBUE RADIO <b>122.50</b>	CTAF <b>122.7 0 *</b>	<b>122.5 0 *</b>
-------------------------	--	---------------------------------	--------------------------	------------------



1000	2500	WLK 114.2	Remain within 10 NM
------	------	-----------	---------------------



CATEGORY	A	B	C	D
S-22	400-1 383 (400-1)			400-1¼ 383 (400-1¼)
CIRCLING	440-1 423 (500-1)	480-1 463 (500-1)	480-1½ 463 (500-1½)	580-2 563 (600-2)
GODBE FIX MINIMUMS				
S-22	340-1 323 (400-1)			
CIRCLING	440-1 423 (500-1)	480-1 463 (500-1)	480-1½ 463 (500-1½)	580-2 563 (600-2)



AK, 22 OCT 2009 to 17 DEC 2009

AK, 22 OCT 2009 to 17 DEC 2009

SELAWIK, ALASKA  
Amdt 1 09071

66°36'N-160°00'W

# SELAWIK (WLK) (PASK)

## VOR RWY 22