

RNAV (GPS) Z RWY 22

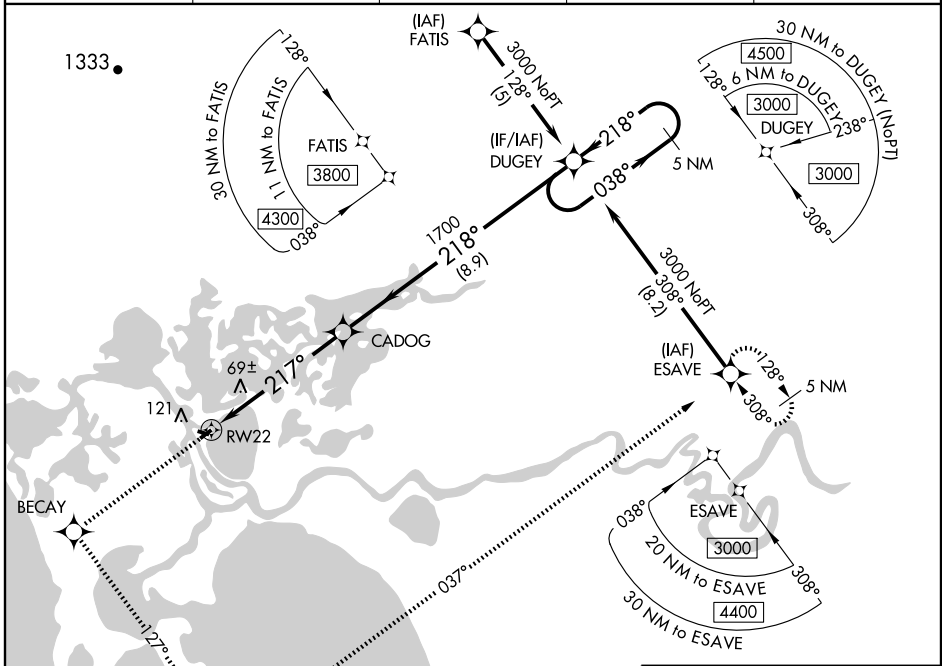
SELAWIK (WLK) (PASK)

WAAS CH 40404 W22A	APP CRS 217°	Rwy Idg TDZE Apt Elev	3002 17 17
---------------------------------	------------------------	-----------------------------	---------------------------------------

⚠ Baro-VNAV NA when using Kotzebue altimeter setting. For uncompensated Baro-VNAV systems, LNAV/VNAV NA below -25°C (-13°F) or above 49°C (120°F). DME/DME RNP-0.3 NA. Visibility reduction by helicopters NA. If local altimeter setting not received, use Kotzebue altimeter setting and increase all DAs/MDAs 160 feet.

MISSED APPROACH: Climb to 3000 direct BECAY and left turn via 127° track to APACU and left turn via 037° track to ESAVE and hold.

AWOS-3 135.65	ANCHORAGE CENTER 119.2 263.0	KOTZEBUE RADIO 122.50	CTAF 122.7 0 *	122.5 0 *
-------------------------	--	---------------------------------	--------------------------	------------------



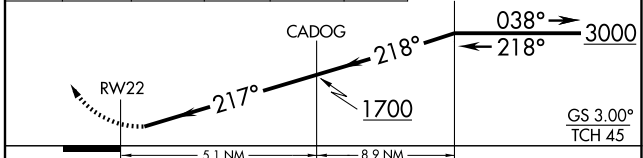
AK, 22 OCT 2009 to 17 DEC 2009

AK, 22 OCT 2009 to 17 DEC 2009

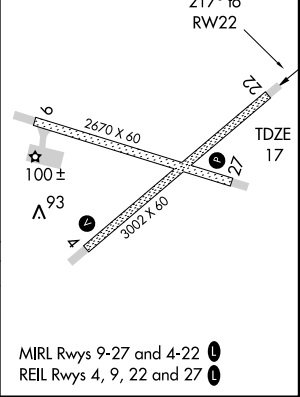


ELEV 17

3000	BECAY	APACU	ESAVE
↑	✧	✧	✧
	127° TRK	037° TRK	



CATEGORY	A	B	C	D
LPV DA		267-1	250 (300-1)	
LNAV/ VNAV		364-1¼	347 (400-1¼)	
CIRCLING	440-1¼ 423 (500-1¼)	480-1¼ 463 (500-1¼)	480-1½ 463 (500-1½)	580-2 563 (600-2)



MIRL Rwy 9-27 and 4-22
REIL Rwy 4, 9, 22 and 27