

RNAV (GPS) RWY 4

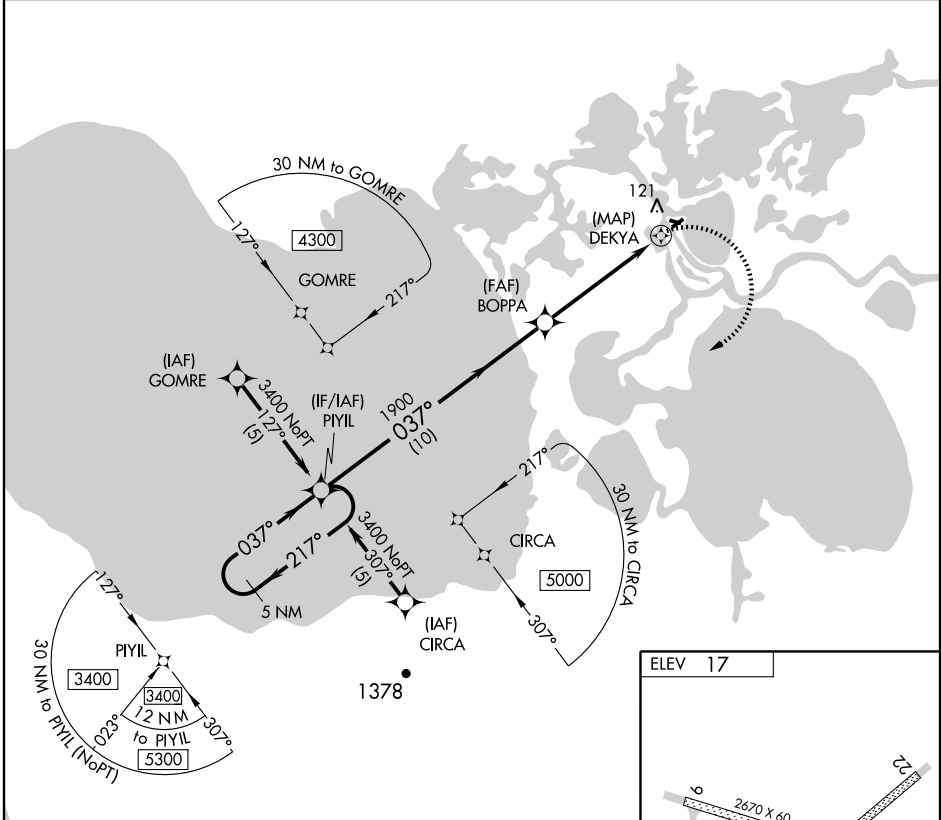
SELAWIK (WLK) (PASK)

APP CRS	Rwy Idg	3002
037°	TDZE	17
	Apt Elev	17

▽ DME/DME RNP-0.3 NA. Visibility reduction by helicopters NA. If local altimeter setting not received, use Kotzebue altimeter setting and increase all MDAs 160 feet. **▲** VDP NA when using Kotzebue altimeter setting

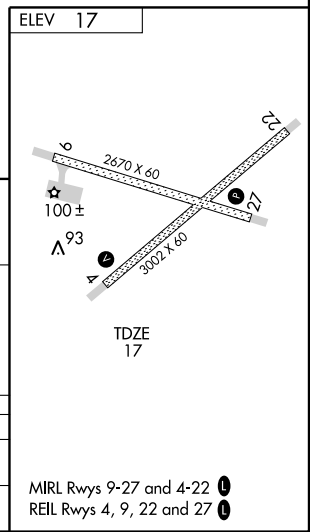
MISSED APPROACH: Climbing right turn to 3400 direct PIYIL and hold.

AWOS-3 135.65	ANCHORAGE CENTER 119.2 263.0	KOTZEBUE RADIO 122.50	CTAF 122.7 0*	122.5 0*
-------------------------	--	---------------------------------	-------------------------	-----------------



AK, 22 OCT 2009 to 17 DEC 2009

AK, 22 OCT 2009 to 17 DEC 2009



5 NM Holding Pattern		VGSI and descent angles not coincident.		3400	PIYIL
3400 ← 217°		→ 037°		BOPPA	0.7 NM to DEKYA
→ 037°		BOPPA			
		1900		DEKYA	
		3.05° TCH 45		0.5	
		10 NM		4.5 NM	
CATEGORY	A	B	C	D	
LNVA MDA	420-1	403 (500-1)	420-1½	403 (500-1½)	
CIRCLING	440-1 423 (500-1)	480-1 463 (500-1)	480-1½ 463 (500-1½)	580-2 563 (600-2)	

MIRL Rwy 9-27 and 4-22 **①**
REIL Rwy 4, 9, 22 and 27 **②**