

NDB/DME KKA 299	APP CRS 014°	Rwy ldg 3000 TDZE 154 Apt Elev 154
Chan 83 (113.6)		

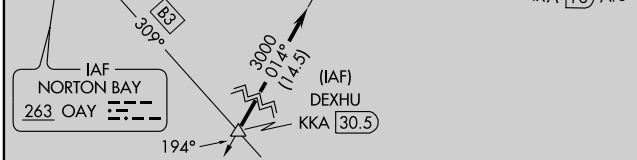
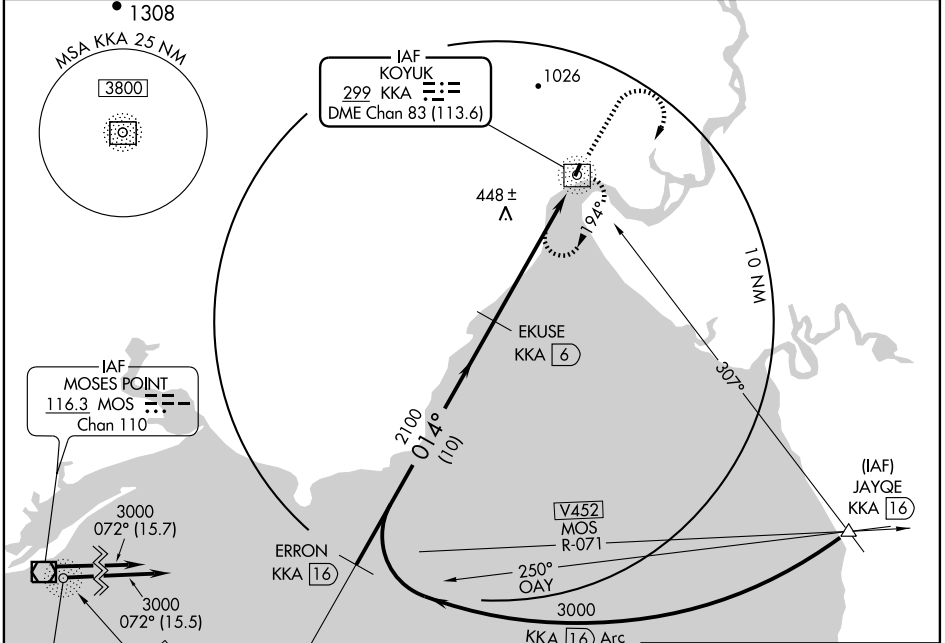
NDB/DME RWY 1

KOYUK ALFRED ADAMS (KKA)(PAKK)

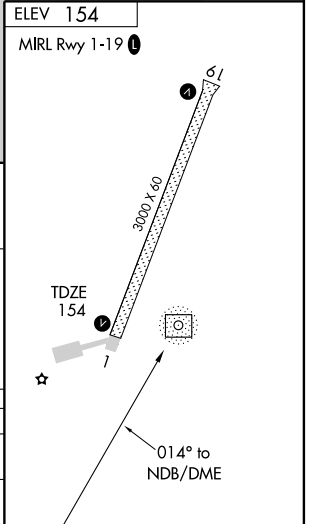
⚠ Circling NA west of Rwy 1-19.

⚠ MISSED APPROACH: Climb to 1800 then climbing right turn to 2300 direct KKA NDB/DME and hold.

AWOS-3 134.95	ANCHORAGE CENTER 135.7 335.5	NOME RADIO 122.35	CTAF 122.8
-------------------------	--	-----------------------------	----------------------



	1800	2300	KKA 299
	↑	↷	
	VGS1 and descent angles not coincident.		
CATEGORY	A	B	C
S-1	800-1 646 (700-1)	800-1 3/4 646 (700-1 3/4)	NA
CIRCLING	800-1 646 (700-1)	940-2 1/4 786 (800-2 1/4)	NA



AK, 22 OCT 2009 to 17 DEC 2009

AK, 22 OCT 2009 to 17 DEC 2009