

KOYUK, ALASKA

AL-9204 (FAA)

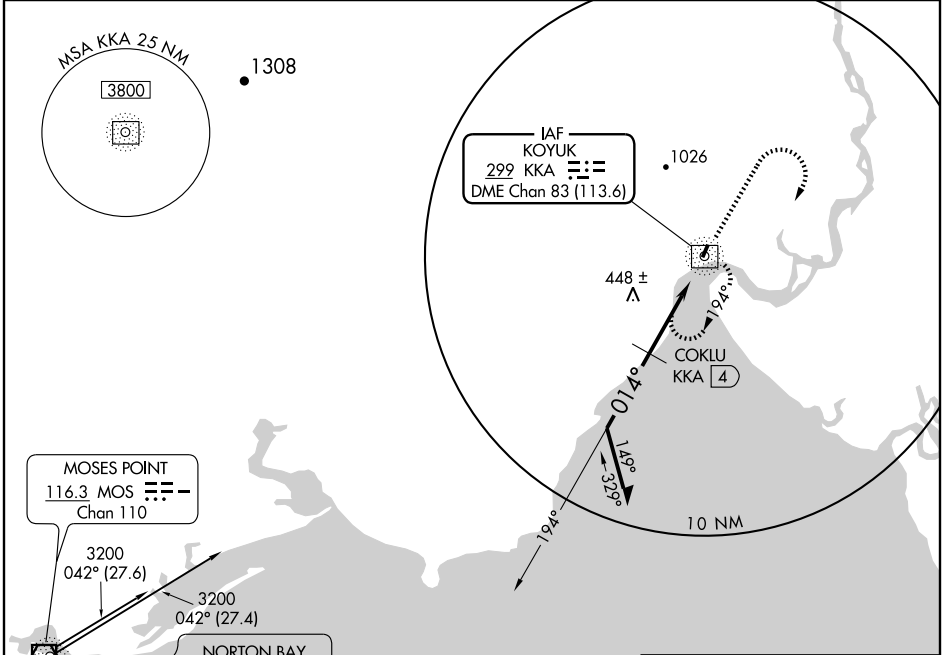
# NDB RWY 1

KOYUK ALFRED ADAMS (KKA)(PAKK)

NDB/DME KKA <b>299</b>	APP CRS <b>014°</b>	Rwy Idg TDZE Apt Elev	<b>3000</b> <b>154</b> <b>154</b>
Chan <b>83 (113.6)</b>			

**⚠** Circling NA west of Rwy 1-19. MISSED APPROACH: Climb to 1800 then climbing right turn to 2500 direct to KKA NDB/DME and hold.

AWOS-3 <b>134.95</b>	ANCHORAGE CENTER <b>135.7 335.5</b>	NOME RADIO <b>122.35</b>	CTAF <b>122.80</b>
-------------------------	--	-----------------------------	-----------------------

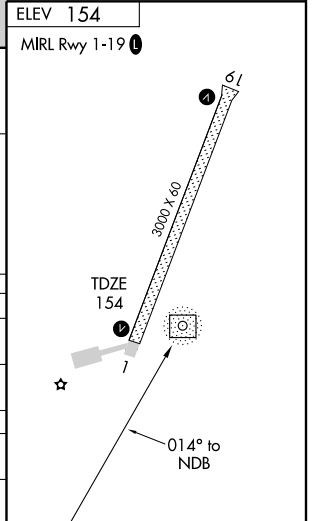
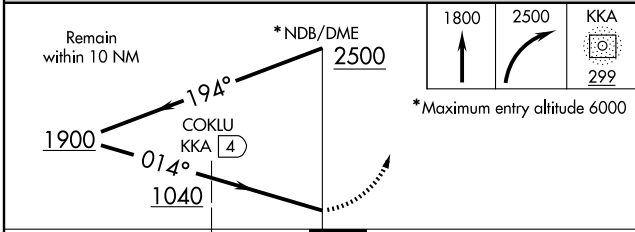


Remain within 10 NM

\*NDB/DME 2500

1800 2500 KKA 299

\*Maximum entry altitude 6000



CATEGORY	A	B	C	D
S-1	1040-1¼	886 (900-1¼)	1040-2¾ 886 (900-2¾)	NA
CIRCLING	1040-1¼	886 (900-1¼)	1040-2¾ 886 (900-2¾)	NA
COKLU FIX MINIMUMS				
S-1	800-1	646 (700-1)	800-1¾ 646 (700-1¾)	NA
CIRCLING	800-1	646 (700-1)	940-2¼ 786 (800-2¼)	NA

KOYUK, ALASKA  
Amdt 1A 09239

64°56'N-161°09'W

# KOYUK ALFRED ADAMS (KKA)(PAKK)

## NDB RWY 1

AK, 22 OCT 2009 to 17 DEC 2009

AK, 22 OCT 2009 to 17 DEC 2009