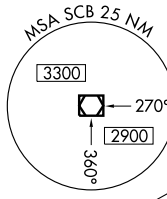
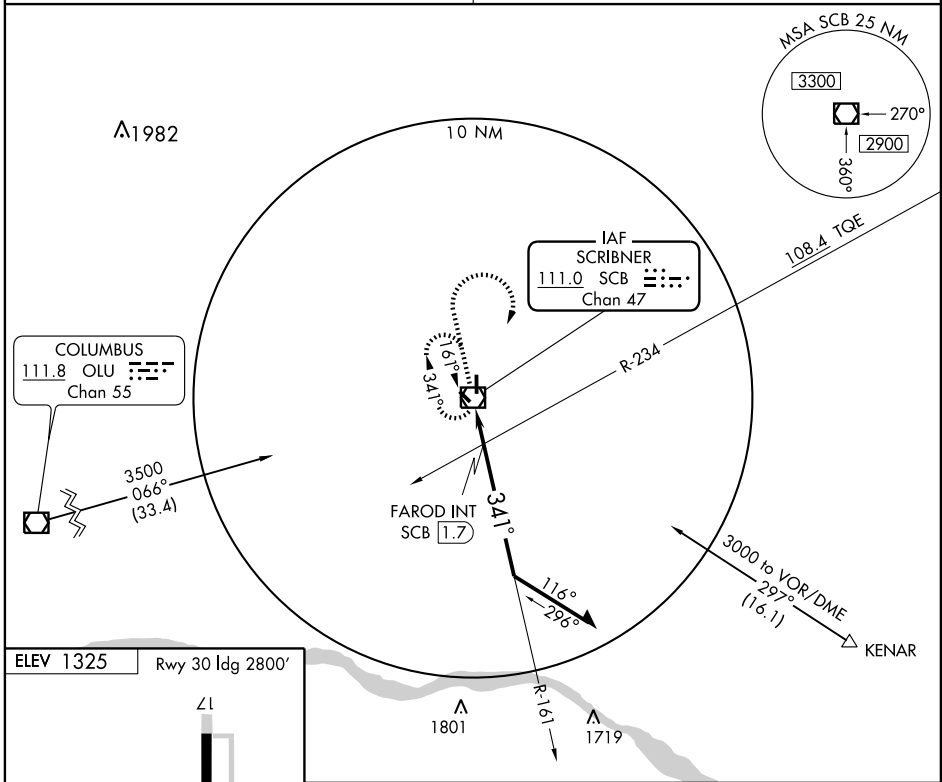


# VOR RWY 35

SCRIBNER STATE (SCB)

VOR/DME SCB <b>111.0</b> Chan <b>47</b>	APP CRS <b>341°</b>	Rwy ldg TDZE Apt Elev	<b>4200</b> <b>1319</b> <b>1325</b>
---	------------------------	-----------------------------	---

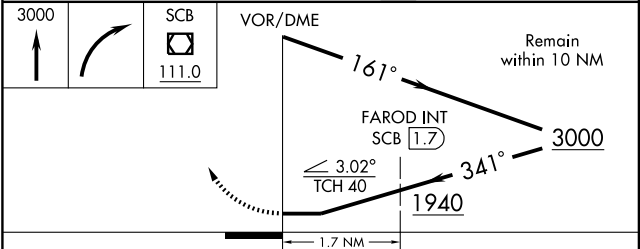
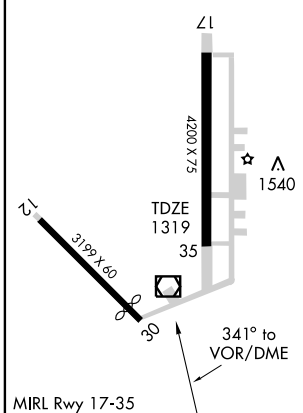
<b>▲ NA</b> Use Fremont altimeter setting.	MISSED APPROACH: Climb to 3000 then right turn direct SCB VOR/DME and hold.
OMAHA APP CON <b>120.1 354.05</b>	CTAF <b>122.9</b>



**COLUMBUS**  
111.8 OLU  
Chan 55

IAF  
**SCRIBNER**  
111.0 SCB  
Chan 47

ELEV 1325	Rwy 30 ldg 2800'
-----------	------------------



CATEGORY	A	B	C	D
S-35	1940-1	621 (700-1)		NA
CIRCLING	1940-1	615 (700-1)		NA
FAROD FIX MINIMUMS				
S-35	1800-1	481 (500-1)		NA
CIRCLING	1900-1	575 (600-1)		NA

NC-2, 22 OCT 2009 to 19 NOV 2009

NC-2, 22 OCT 2009 to 19 NOV 2009