

# RNAV (GPS) RWY 17

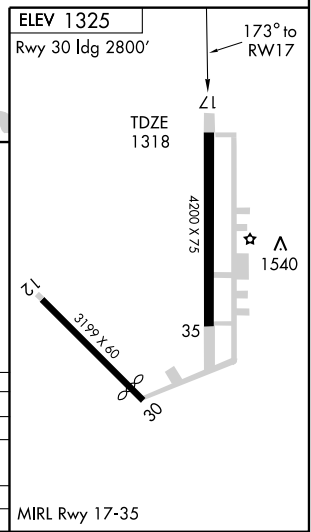
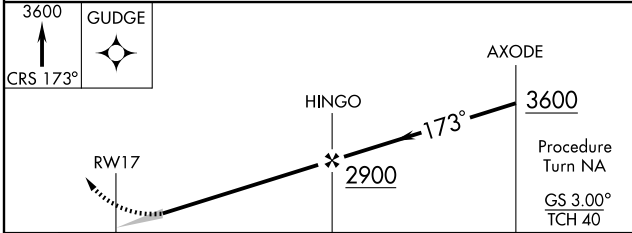
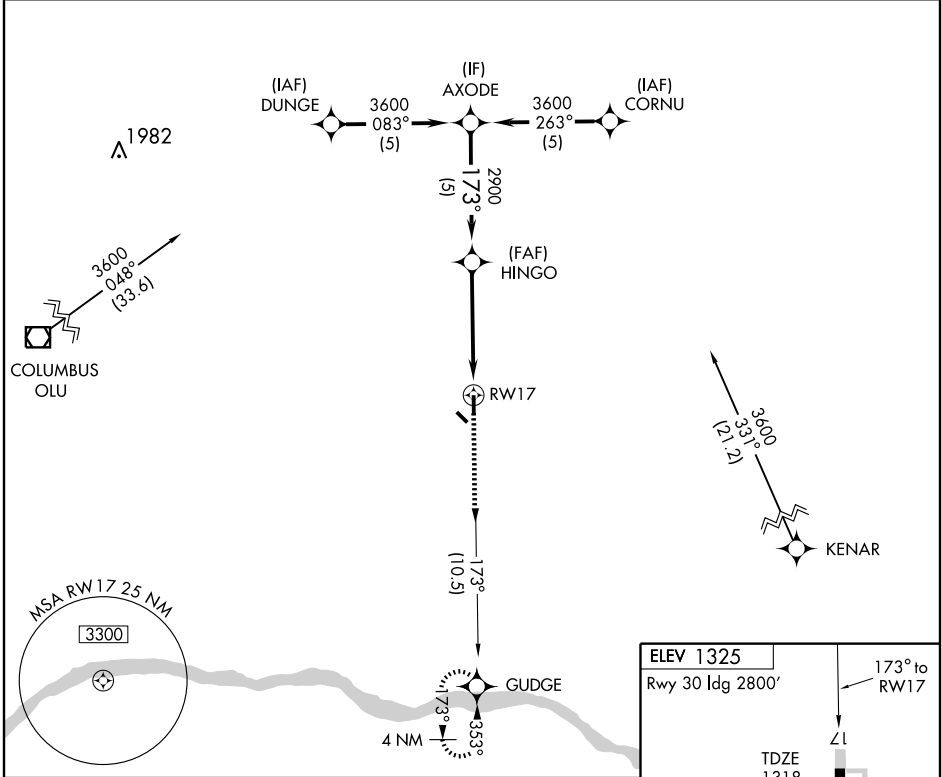
SCRIBNER STATE (SCB)

APP CRS <b>173°</b>	Rwy Idg <b>4200</b>
	TDZE <b>1318</b>
	Apt Elev <b>1325</b>

**▲ NA** GPS or RNP-0.3 Required. DME/DME RNP-0.3 NA. BARO-VNAV NA. Use Fremont altimeter setting.

**MISSED APPROACH:** Climb to 3600 via 173° course to GUDGE WP and hold.

OMAHA APP CON <b>120.1 354.05</b>	CTAF <b>122.9</b>
--------------------------------------	----------------------



CATEGORY	A	B	C	D
GLS PA DA	NA			
LNNAV/VNAV DA	1700-1¼	382 (400-1¼)	NA	
LNNAV MDA	1820-1	502 (600-1)	NA	
CIRCLING	1900-1¼	575 (600-1¼)	NA	

NC-2, 22 OCT 2009 to 19 NOV 2009

NC-2, 22 OCT 2009 to 19 NOV 2009