

RNAV (GPS) RWY 33

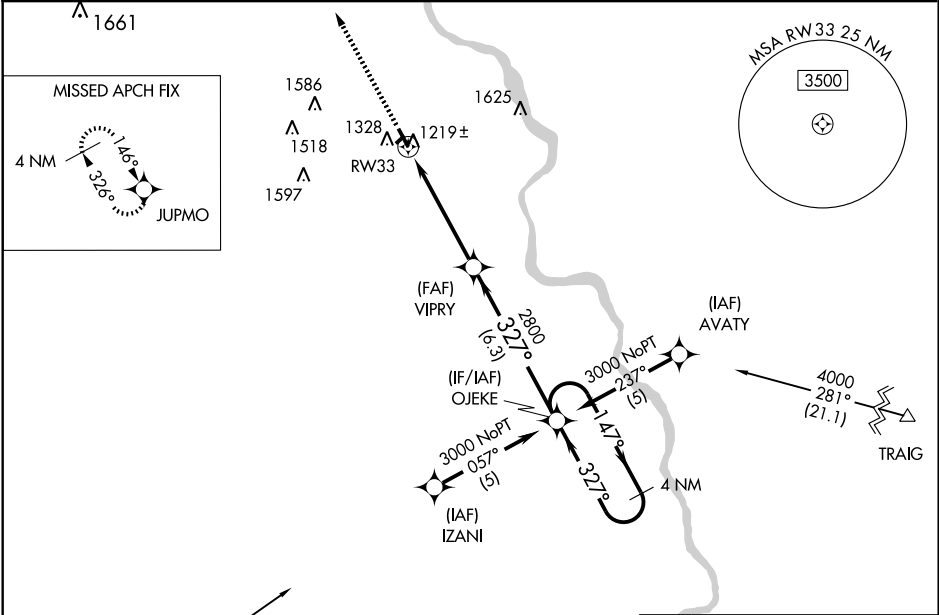
NEBRASKA CITY MUNI (AFK)

WAAS CH 45707 W33A	APP CRS 327°	Rwy Idg 4500 TDZE 1162 Apt Elev 1165
--	------------------------	---

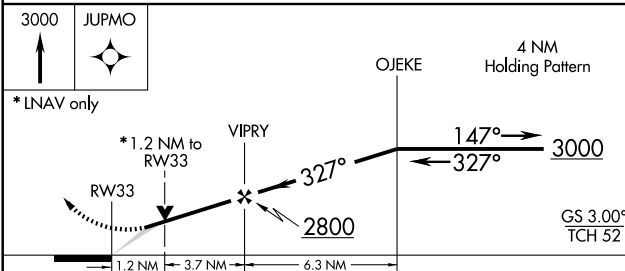
For uncompensated Baro-VNAV systems, LNAV/VNAV NA below -17°C (2°F) or above 54°C (130°F). DME/DME RNP-0.3 NA. Baro-VNAV and VDP NA when using Omaha altimeter setting. When local altimeter setting not received, use Omaha altimeter setting and increase all DA 122 feet and all MDA 140 feet, and increase LPV and LNAV/VNAV visibility ½ mile all Cats.

MISSED APPROACH: Climb to 3000 direct JUPMO and hold.

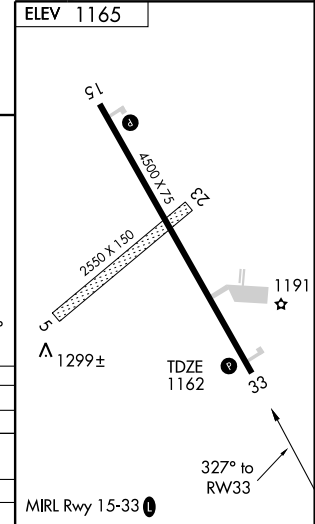
AWOS-3 128.325	OMAHA APP CON 120.1 354.05	UNICOM 122.7 (CTAF) 0
--------------------------	--------------------------------------	---------------------------------



PAWNEE CITY PWE Procedure NA for arrivals at PWE VORTAC via V307 southwest bound and arrivals at TRAIG via V159 southeast bound.



CATEGORY	A	B	C	D
LPV DA	1412-3/4	250 (300-3/4)		NA
LNAV/VNAV DA	1526-1 1/4	364 (400-1 1/4)		NA
LNAV MDA	1600-1	438 (500-1)		NA
CIRCLING	1640-1	475 (500-1)		NA



NC-2, 22 OCT 2009 to 19 NOV 2009

NC-2, 22 OCT 2009 to 19 NOV 2009