

RNAV (GPS) RWY 15

NEBRASKA CITY MUNI (AFK)

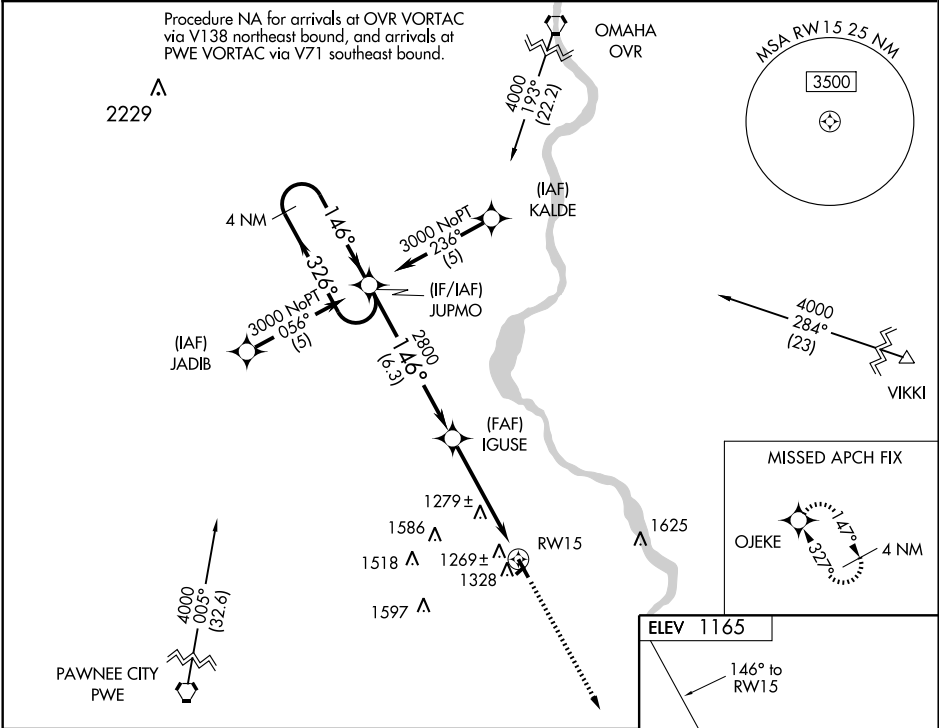
WAAS CH 86407 W15A	APP CRS 146°	Rwy Idg 4500 TDZE 1162 Apt Elev 1165
--	------------------------	---

▼ For uncompensated Baro-VNAV systems, LNAV/VNAV NA below -17°C (2°F) or above 54°C (130°F). DME/DME RNP-0.3 NA. Baro-VNAV and VDP NA when using Omaha altimeter setting. When local altimeter setting not received, use Omaha altimeter setting and increase all DA 122 feet and all MDA 140 feet, and increase LPV and LNAV/VNAV visibility ½ mile all Cats.

▲

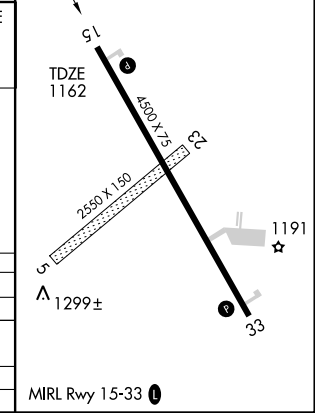
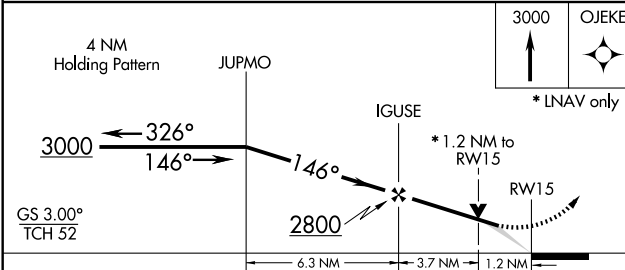
MISSED APPROACH: Climb to 3000 direct OJEKE and hold.

AWOS-3 128.325	OMAHA APP CON 120.1 354.05	UNICOM 122.7 (CTAF) 0
--------------------------	--------------------------------------	---------------------------------



NC-2, 22 OCT 2009 to 19 NOV 2009

NC-2, 22 OCT 2009 to 19 NOV 2009



CATEGORY	A	B	C	D
LPV DA	1412-3/4	250 (300-3/4)		NA
LNAV/VNAV DA	1539-1 1/4	377 (400-1 1/4)		NA
LNAV MDA	1580-1	418 (500-1)		NA
CIRCLING	1640-1	475 (500-1)		NA