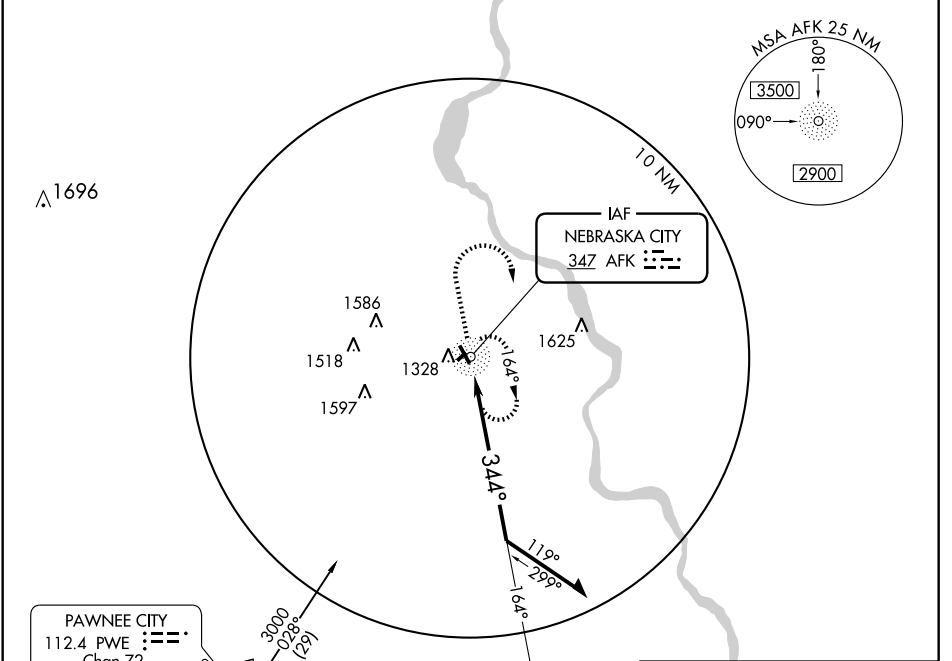


NDB RWY 33
NEBRASKA CITY MUNI (AFK)

NDB AFK 347	APP CRS 344°	Rwy Idg TDZE Apt Elev	4500 1161 1165
-----------------------	------------------------	-----------------------------	---

⚠ Obtain local altimeter setting on CTAF; when not received, use Omaha altimeter setting. **MISSED APPROACH:** Climb to 2600 then right turn direct AFK NDB and hold.

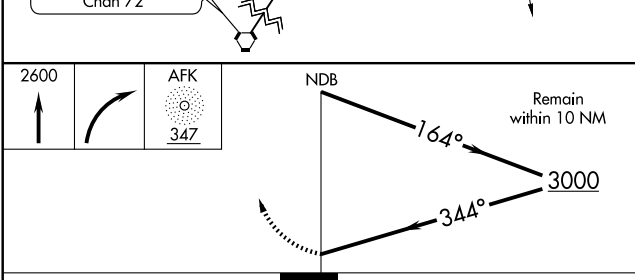
AWOS-3 128.325	OMAHA APP CON 120.1 354.05	UNICOM 122.7 (CTAF)
--------------------------	--------------------------------------	-------------------------------



NC-2, 22 OCT 2009 to 19 NOV 2009

NC-2, 22 OCT 2009 to 19 NOV 2009

PAWNEE CITY
112.4 PWE
Chan 72



CATEGORY	A	B	C	D
S-33	1840-1	679 (700-1)		NA
CIRCLING	1840-1	675 (700-1)		NA
OMAHA ALTIMETER SETTING MINIMUMS				
S-33	1960-1 799 (800-1)	1960-1 ¼ 799 (800-1 ¼)		NA
CIRCLING	1960-1 795 (800-1)	1960-1 ¼ 795 (800-1 ¼)		NA

