

RUSTON, LOUISIANA

AL-9201 (FAA)

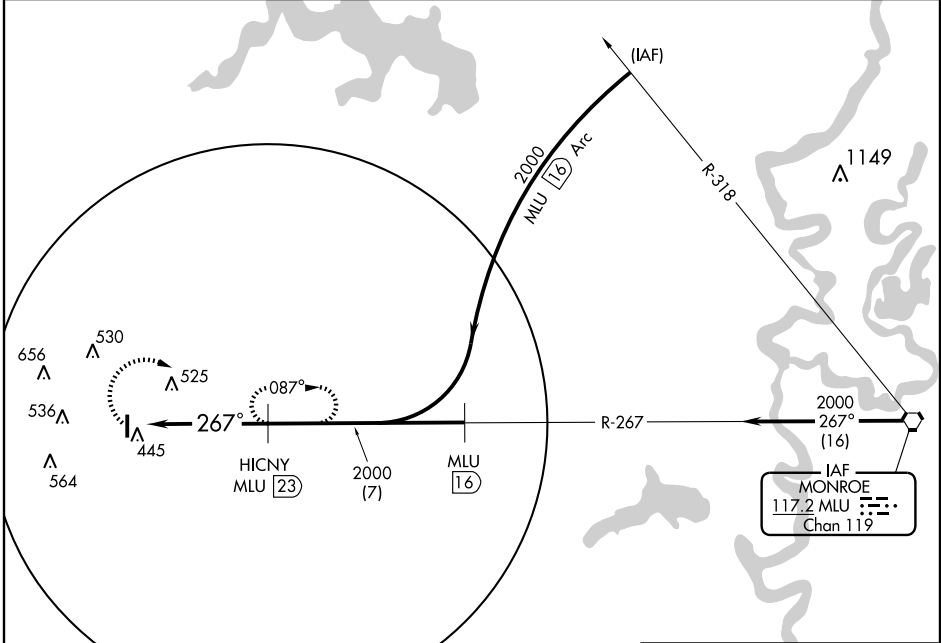
VORTAC MLU <b>117.2</b> Chan <b>119</b>	APP CRS <b>267°</b>	Rwy Idg TDZE Apt Elev <b>N/A</b> <b>N/A</b> <b>311</b>
---	------------------------	---

**VOR/DME-A**  
RUSTON RGNL (RSN)

**NA** If local altimeter setting not received on 119.525, obtain local altimeter setting on CTAF; when not received, procedure NA.

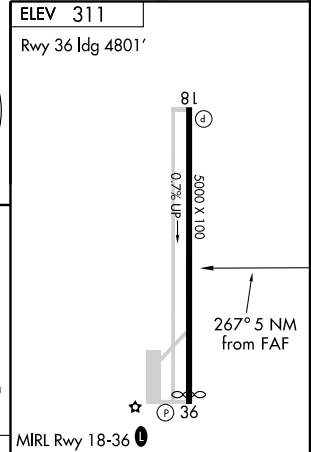
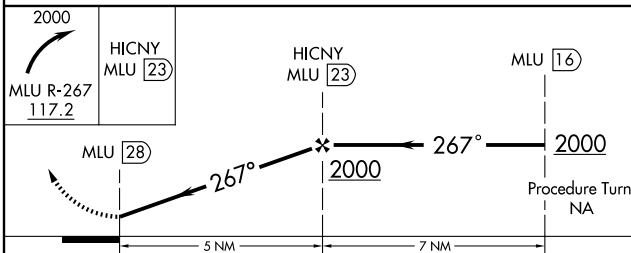
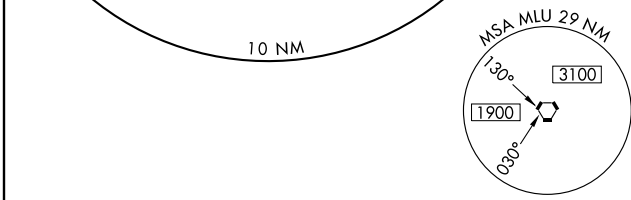
**MISSED APPROACH:** Climbing right turn to 2000 via MLU R-267 to HICNY/23 DME and hold.

AWOS-3 <b>119.525</b>	MONROE APP CON* <b>126.9 307.9</b>	CLNC DEL <b>118.8</b>	UNICOM <b>122.7 (CTAF)</b>
--------------------------	---------------------------------------	--------------------------	-------------------------------



SC-4, 22 OCT 2009 to 19 NOV 2009

SC-4, 22 OCT 2009 to 19 NOV 2009



CATEGORY	A	B	C	D	Knots	60	90	120	150	180
CIRCLING	920-1 609 (700-1)	920-1¼ 609 (700-1¼)	920-1½ 609 (700-1½)	920-2 609 (700-2)	Min:Sec					

RUSTON, LOUISIANA  
Orig-B 08101

32°31'N - 92°35'W

RUSTON RGNL (RSN)  
**VOR/DME-A**