

RUSTON, LOUISIANA

AL-9201 (FAA)

NDB RWY 36

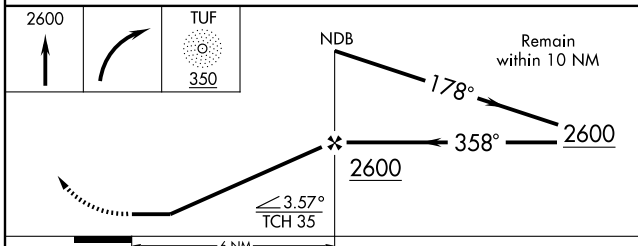
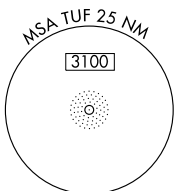
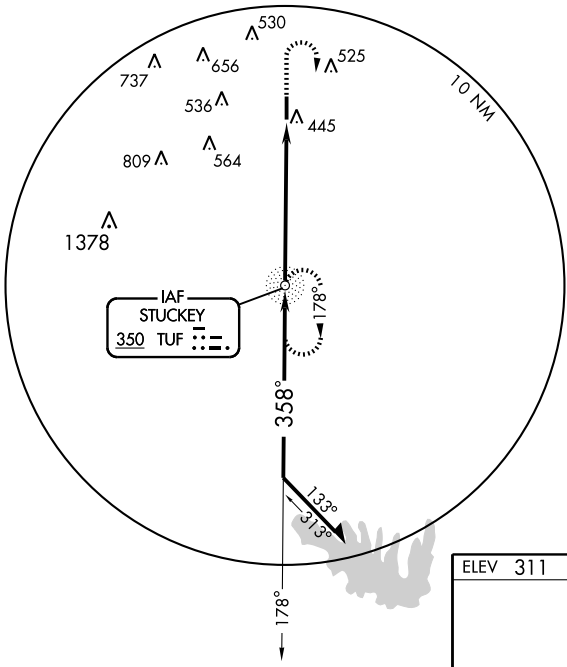
RUSTON RGNL (RSN)

TUF NDB 350	APP CRS 358°	Rwy ldg 4801 TDZE 311 Apt Elev 311
-----------------------	------------------------	---

▲ NA If local altimeter setting not received on 119.525, obtain local altimeter setting on CTAF; when not received, procedure NA.

MISSED APPROACH: Climb to 2600, then right turn direct TUF NDB and hold.

AWOS-3 119.525	MONROE APP CON* 126.9 307.9	CLNC DEL 118.8	UNICOM 122.7 (CTAF) 0
--------------------------	---------------------------------------	--------------------------	---------------------------------



ELEV 311	Rwy 36 ldg 4801'
----------	------------------

MIRL Rwy 18-36 0	358° 6 NM from FAF				
FAF to MAP 6 NM					
Knots	60	90	120	150	180
Min:Sec	6:00	4:00	3:00	2:24	2:00

CATEGORY	A	B	C	D
S-36	800-1 489 (500-1)		800-1½ 489 (500-1½)	800-1½ 489 (500-1½)
CIRCLING	800-1 489 (500-1)		800-1½ 489 (500-1½)	880-2 569 (600-2)

RUSTON, LOUISIANA
Orig-A 08101

32°31'N - 92°35'W

RUSTON RGNL (RSN)

NDB RWY 36

SC-4, 22 OCT 2009 to 19 NOV 2009

SC-4, 22 OCT 2009 to 19 NOV 2009