

RUSTON, LOUISIANA

AL-9201 (FAA)

# GPS RWY 36

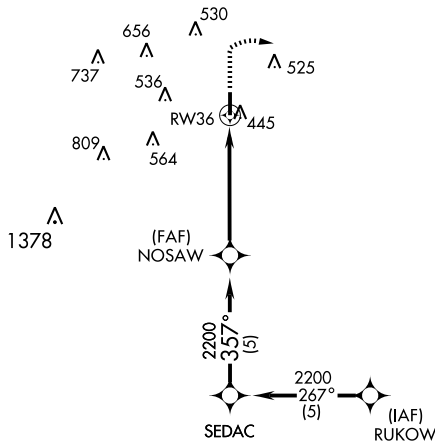
RUSTON RGNL (RSN)

APP CRS	Rwy Idg	<b>4801</b>
<b>357°</b>	TDZE	<b>311</b>
	Apt Elev	<b>311</b>

**▲ NA** If local altimeter setting not received on 119.525, obtain local altimeter setting on CTAF; when not received, procedure NA.

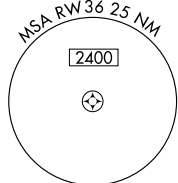
**MISSED APPROACH:** Climb to 2000 then climbing right turn to 3000 direct WETER WP.

AWOS-3 <b>119.525</b>	MONROE APP CON* <b>126.9 307.9</b>	CLNC DEL <b>118.8</b>	UNICOM <b>122.7 (CTAF) 0</b>
--------------------------	---------------------------------------	--------------------------	---------------------------------

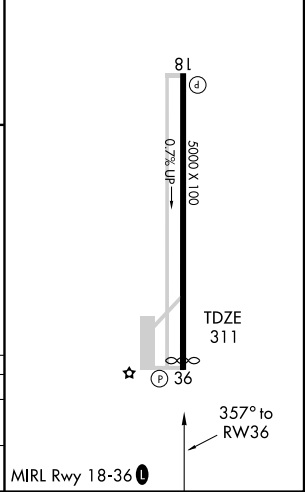
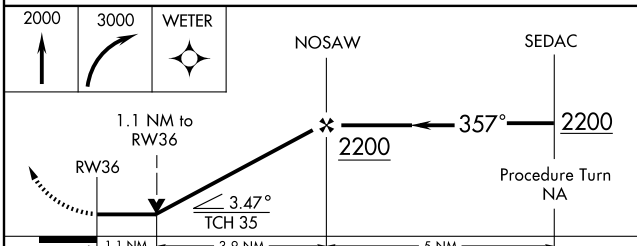


SC-4, 22 OCT 2009 to 19 NOV 2009

SC-4, 22 OCT 2009 to 19 NOV 2009



ELEV 311	Rwy 36 Idg 4801'
----------	------------------



CATEGORY	A	B	C	D
S-36	760-1 449 (500-1)		760-1½ 449 (500-1½)	760-1½ 449 (500-1½)
CIRCLING	800-1 489 (500-1)		800-1½ 489 (500-1½)	880-2 569 (600-2)

RUSTON, LOUISIANA  
Orig-A 08101

32°31'N - 92°35'W

# RUSTON RGNL (RSN)

## GPS RWY 36